



October
2023

Shirley Parish Magazine

**You designed and made the
earth,**



**Ps 74:17
and winter.**

You made summer...

SHIRLEY PARISH GUIDE (see also inside the back cover)

CLERGY

Reverend Paul Day

email: vicar@shirleyparishb90.co.uk

Tel: 0121 537 9672

Reverend Richard Haynes

email: curate@shirleyparishb90.co.uk

Tel: 07972 530161

Reverend Wendy Martin

email: associatepriest@shirleyparishb90.co.uk

Tel: 07543 829571

Reverend Wendy Carter

email: revwendy@sky.com

Tel: 0121 744 6315

Reverend Nick Ball

email: nicholaseball@hotmail.com

Tel: 0121 243 1336

Reverend Dr. Theresa Jones

email: theresaj1@btinternet.com

Tel: 01564 822687

Parish Operations Manager - Chris Kynaston

Parish Office, Church House, Church Road, Shirley, B90 2AX

Opening hours: Monday to Friday, 9.30am to 12.30pm

Telephone: 0121 745 8896

Email: office@shirleyparishb90.co.uk

Parish Website: <https://www.shirleyparishb90.co.uk>

Social Media: [twitter.com/@ParishB90](https://twitter.com/ParishB90)

facebook.com/@AdventureinFaithB90

YouTube: <https://www.youtube.com/@shirleyparish5736>

Zoom: <https://us02web.zoom.us/j/4904334906>



CHURCH HOUSE (opposite St James Church), Church Road, Shirley B90 2AX

ST JAMES THE GREAT CHURCH, Church Road, Shirley B90 2AX

CHRIST THE KING CHURCH, Widney Junior School, Clifton Crescent, Solihull B91 3LQ

ST JOHN THE DIVINE CHURCH, Tilehouse Lane, Tidbury Green, Shirley B90 1PW

FOR ANY ENQUIRIES ABOUT THIS MAGAZINE PLEASE CONTACT THE PARISH OFFICE OR THE EDITOR -

Gill Hanton, 200 Tythe Barn Lane, Dickens Heath B90 1PF

Telephone : 0121 733 2347 or 07973 942145

Email : shirleyparishmagazine@gmail.com

Deadline for information and articles for next month's magazine: 12th of the month

Whilst every care is taken to ensure that the contents of the magazine are correct, the Parish cannot be responsible for any errors that may occur in the editorial or advertisements, nor for the actions of the advertisers.

Registered Charity number 1131912

OUR SERVICES IN OCTOBER

Date	Time	Service	Venue
Sunday 1st	10.30am 6pm	Harvest Festival Reflective Worship	St James Church St John's Church
Thursday 5th	10.30am	Holy Communion	St James Church
Sunday 8th	8am 9am 10.30am 10.30am	Holy Communion Holy Communion Morning Worship Holy Communion	St James Church St John's Church St James Church Christ the King Church
Thursday 12th	10.30am	Holy Communion	St James Church
Sunday 15th	9am 10.30am 10.30am	Morning Worship Holy Communion Morning Worship	St John's Church St James Church Christ the King Church
Thursday 19th	10.30am	Holy Communion	St James Church
Saturday 21st	10am	Messy Church	St James Church
Sunday 22nd	8am 9am 10.30am 10.30am	Holy Communion Holy Communion Worship 4 Everyone Holy Communion	St James Church St John's Church St James Church Christ the King Church
Thursday 26th	10.30am	Holy Communion	St James Church
Sunday 29th	8am 9am 10.30am 10.30am 3.30pm	Holy Communion Holy Communion Holy Communion Holy Communion Forest Church	St James Church St John's Church St James Church Christ the King Church St John's Garden



**PLEASE CHECK FOR ANY CHANGES ON THE WEEKLY NOTICE SHEET, SOCIAL MEDIA
OR ON OUR WEBSITE <https://www.shirleyparishb90.co.uk>**

*Copies of the sermons can be found on our website -
<https://www.shirleyparishb90.co.uk/download-a-sermon>*

THE FRIENDS OF ST JAMES 100 CLUB

Congratulations to the September winners

£50 ~ Pauline Daniels £25 ~ Sheila Walford

PODIATRIST / CHIROPODIST

Surgery and Home Visits

JONATHAN LEESE D.Pod.M., M.Ch.S

HCPC REGISTERED

Tel: 0121 733 1292

193 Creynolds Lane, Shirley B90 4ES

Decorating Plus ... (Odd Jobs)

B90 and nearby

Call Stewart on 07802 566 441

Email - DecoratingPlus@hotmail.co.uk

Advertisement Feature

Quality care in Solihull you can trust

When a family is thinking about care for a loved one, they want the best - they want to know that the care home they choose will put their loved one's safety, happiness and wellbeing first.

Blossomfield Grange is managed by award-winning provider Care UK - one of the UK's most highly successful care home operators* with over 40 years' experience of delivering high quality care to older people.

Blossomfield Grange stands out from other care homes with its large apartment-style living and luxury facilities. The home offers a choice between two room types, each with their own ensuite bathrooms, private dining areas and kitchenettes. Our one bed suites are ideal for individuals, whilst our companion suites offer an additional room, perfect for couples to enjoy as an extra living area.

Living at Blossomfield Grange is all about quality of life, and we offer tailored care both for residential residents, as well as those living with dementia on our specialist memory care floor. All residents are supported to continue to enjoy lifelong hobbies and make new friends, from music sessions to quizzes, while dancing, exercise classes, yoga and gardening support residents to stay fit and active.

Blossomfield Grange care home
1 Worcester Way,
Off Dog Kennel Lane,
Solihull B90 4JX
0121 756 7156
careuk.com/blossomfield-grange

Join us for our upcoming event

Age UK Solihull information event

Tuesday 26th September 2023
11am - 12 noon

Blossomfield Grange is delighted to welcome Age UK Solihull, who will be sharing information about what they do and how they can help.

To RSVP, please call
0121 667 4626.

*As rated by the Care Quality Commission in England and the Care Inspectorate in Scotland.



HARVEST HOME



We celebrate Harvest Festival this year on Sunday 1st October. By then, the trees will be showing their glorious Autumn colours, one of the many marvels of creation!

We will be giving thanks for God's amazing love and generosity and for everyone who works to provide us with food. We will be thinking about how we can be better stewards of creation by farming in such a way as to allow room for nature to flourish.

We will be bringing gifts for the Foodbank, conscious that so many local people struggle to afford the bare necessities of life. We know also that communities overseas, many already living in dire poverty, are becoming more desperate because of the impact of climate change and need our prayers and support. We see all around us the results of bad stewardship of creation and the urgent need to change the way we live.

With so much bad news, it can be easy to wonder whether anything we do can make a difference. The Gospel is the good news. Jesus invites us to a way of life which can heal people, nations, and the planet. However little we feel we can do, it all adds up.

The poet Gideon Heugh puts this so much better than I can:

*Do not be afraid –
to complete the repair of the world
is not why you were made.
You were created to play
only your small part; whatever is within your hands;
whatever is the now of your heart.*

So let us be glad at Harvest time but also commit ourselves to play our part, however small, in caring for all that God has created and given us.

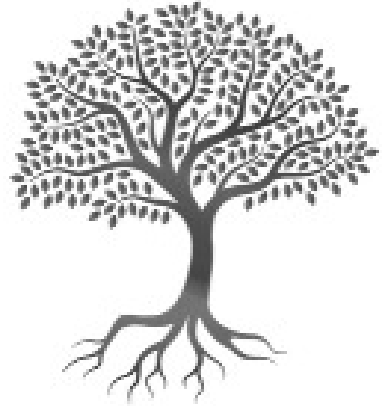
Kate Crocker



DEEPER ROOTS

I'm not much of a gardener but I do know that trees need roots. Roots which go deep into the ground. It's these roots that provide the energy, strength, and nutrients for the tree's life. And deeper roots lead to bigger and stronger trees.

This Autumn we are taking some time to think about the roots of our faith. The channels through which we grow in our understanding and knowledge of God and his love for us. We will be thinking about how our roots can become deeper so that we can grow stronger in faith, and in particular we will be looking at how we can support each other more and how we can develop our prayer lives.



Pilgrim Partners

Members of the ministry team have been meeting in pairs over the last few months to encourage, support and pray for each other – we have been calling this Pilgrim Partners and would like to extend it further across our congregations through the Autumn. If you would like to meet with another Church member every month or so for support and encouragement, please have a word with Paul or Richard and we'll try to link you up with someone.

This is not something to be feared! No-one will be checking up on you. You and your partner will simply share what you wish to and by doing so support each other. There is a set of questions we have been using as a starting point for our discussions, but these are only a suggestion. Ministry team members have discovered that the more we share the more we trust each other, the more we are encouraged and the deeper our roots grow.

Prayer

Let's be honest prayer is not easy. We all struggle at times. We can't find the words we want. And when we do spend some time in prayer we don't seem to be able to concentrate and we find our thoughts wandering. And so, perhaps, we give up trying.

To help us we are compiling a Parish Prayer Book. This will give some suggestions for prayers that we can use for either (or both) mornings and evenings. It will have various options depending on how much time you would like to spend. And it will contain some prayers suggested by members of our congregations here in Shirley. So, if you have a prayer that you love and which means something special to you, let the Parish Office have a copy of it (by email or by written note). If you wish you can say why it is so special. We will include a selection in the book.

The Lord's Prayer – Lord teach us to pray

Jesus gave us a wonderful pattern for prayer in what we call The Lord's Prayer. In our sermons in October and the first Sunday in November we will thinking a bit deeper about the Lord's Prayer, taking a section at a time and asking how it can help us to deepen our own prayer life. We will be looking at the various elements in the prayer which we can use to give a structure to our own prayers – adoration, confession, intercession, thanksgiving and praying with others. The series is summarised below:

Sunday	Lord's Prayer section	Themes	Readings
8th October	Our Father, who art in heaven, hallowed be thy name;	Adoration; being in the presence of God. Praising God for who he is.	Psalm 84 Colossians 1: 15-20 Matthew 6: 7-13
15th October	And forgive us our trespasses, as we forgive those who trespass against us.	Forgiveness – our relationship with God and with others. Accepting the free gift offered to us and sharing that gift with those around us.	Psalm 51: 1-12 1 John 1: 5-2:2 Luke 15: 11-32
22nd October	thy kingdom come; thy will be done; on earth as it is in heaven. Give us this day our daily bread. And lead us not into temptation; but deliver us from evil.	Intercession – asking God on behalf of ourselves and for others. Praying for the world's needs.	Psalm 20 Colossians 1: 3-14 Luke 11: 5-13
29th October	For thine is the kingdom, the power and the glory, for ever and ever.	Thanksgiving – for all that God gives us and does for us.	Psalm 111 Colossians 3: 14-17 Luke 22: 14-21
5th November	All Saints Day	Praying day by day with Christians the world over.	Psalm 47 Revelation 7: 9 - end Matthew 5: 1-12

Can prayer be more than words?

Lastly we will be looking at more creative ways of praying. We don't have to just use formal prayers with 'Amen' at the end. We could use drawing, making, music, art, nature – and far more. So put **Saturday 11th November** in your diary. St James Church will be open and full of ideas that you can try. Some will do nothing for you, but I am sure you will find some new ways of prayer that help you grow and deepen your faith. It will be a very hands on kind of day and there will be more information about it in the next few weeks.

POEMS & PIECES



A selection of original writing compiled by Shirley Parish Book Club.

Sold to raise funds for 'The Pod Project' at St James the Great, Shirley, see back page for details.

Suggested minimum donation £2.



POEMS & PIECES

Shirley Parish Book Club have compiled a booklet of short stories and poems.

These have been provided by members of the parish and have either been written by them or by a relative.

It's a thoroughly enjoyable read, just right for a quiet afternoon with a nice cuppa!

The book is available in all our churches and the Parish Office, for a minimum donation of £2, all funds raised are going to the Pod Project.

Thank you for your support.

Belinda Piasecki

THE POD PROJECT

A big 'thank you' to all those who have donated and fund raised for the project so far. At the time of going to print over £11,000 had been raised.

You can find out more about the project and how to donate on our website - <https://www.shirleyparishb90.co.uk/the-pod-project> (also in the September issue of this magazine and in St James Church).

OUR WELCOME CAFE

Sarah and I would like to say a big 'thank you' to all our cakemakers and volunteers that make up our very successful and ever-growing Café. Of course, without our regular customers it just wouldn't work and it has been lovely to see how many new faces have come through the doors. Our thanks go out to you all for making them feel welcome after all that's our title – a truly Welcome Café - open to everyone.

Whenever we ask for help you are there, when we ask for raffle prizes you are there, extra cakes you are there.

We are having our Macmillan Coffee Morning soon and I know it will be a good event raising money for such a worthwhile cause - all the donations on that day will go directly to them.

So, a very big thank you to all of you, keep up your good work and bring your family and friends along too.

God's blessings, Sarah Penfold and Denise Smith

LOYALTY

In Edinburgh, the capital city of Scotland, stands Greyfriars Graveyard. In 1858 a faithful dog called Bobby followed the remains of his beloved master to this cemetery. Here the dog stayed on or near the graveside until his death, 14 years later.

This is a story about loyalty. More poignantly, many people have devoted themselves to others through all kinds of circumstances. It's amazing what some people have gone through in giving their lives to someone to ensure their comfort, safety, and well-being.

There are numerous examples of loyalty in the Bible. The widow Ruth refused to return home to Moab to be with her people. Instead, she committed herself to staying with her mother-in-law, Naomi, whatever happened.

The young David, many years before he became king, and Jonathan the son of King Saul promised to look out for each other no matter what ill befell them.

Moses was faithfully loyal to God. They spoke with each other as if they were friends! He served God endlessly despite the frustrations of leading a vast crowd of people through the desert for 40 years.

What about us? How loyal are we to God? A difficult question, when so much can sway our eyes, our minds, emotions and behaviour in a world that thinks it doesn't need a faithful and loving God to care for them! It's easy to be loyal when times are good, but a different thing when hardships surround us.

Do we ever feel uncomfortable singing hymns about courage, obedience and service? Some provoke a challenge. Do we *really* mean all the words we sing? Consider the popular hymn *Jesus I have promised to serve Thee to the end*. It is a stirring declaration of faith, with prayer requests that we be steadfast in all circumstances. While it is good to sing hymns about loyalty, we should also endeavour to work out what our commitment to God really entails.

Jesus made some testing statements about loyalty, and warned His hearers about weighing up the pros and cons before following Him. Jesus said 'Take up your cross'. This challenging phrase is the ultimate test of our devotion and dedication to Him.

Loyalty in all relationships is a joy to behold, but no loyalty is greater than our loyalty to the Lord. Fortunately, God knows our weaknesses and will always pick us up when we stumble and will forgive us when we fail. After all, Jesus is 100% loyal to us and promised "I will never leave you and never forsake you." Amen to that!



MOTHERS' UNION REPORT

Our Desert Island Discs evening meeting on Thursday 17th August commenced with Eric Coats music "By the Sleepy Lagoon". Linda Pitt welcomed all present and introduced our presenter for the evening Don Abbey.

Don introduced our guests Rev Richard and his wife Gill Postill and asked them to share with us their choice of music and the reasons for this should they be cast away on a desert island. To set the scene Don asked them how they came to Shirley. Richard explained that they joined St James after their move to Shirley twenty one years ago on his retirement from St Mary's, Acocks Green and Gill, who is a keen bellringer, joined Shirley Ringers. Gill is also a bellringer at Birmingham Cathedral.



Gill's first choice was "Young Person's Guide to the Orchestra" by Benjamin Brittain and this was followed by Richard's choice of Cole Porter's jazz piece Art Tatum, "Just one of those Things". Gill followed with ABBA "Thank you for the Music".

Gill said there was always music in her family home in Lichfield.

Richard was born in Bridlington in the East Riding of Yorkshire and went to Hull University after which he came to Birmingham 63 years ago to teach. Richards next choice was

Schubert "Last Symphony", Gill's next choice was Berlioz Symphonie Fantastique first performed in 1830 and cast in five movements, each movement tells a different story.

"Kalinka – Russian Folk Song" was Richard's next choice written in 1860 by Ivan Larionov.



Whilst teaching Richard took a school party to Russia, visiting Moscow, St. Petersburg and the Baltic.

Gill's next choice, which is a personal favourite of mine, was "The Trout" by Schubert. Richard added that their washing machine plays the trout to signal it has finished.

Richard's next piece of music was Charles Villiers Stanford Magnificat in G. As a child he sang in the local church choir along with his grandmother, grandfather, mother and father and received a good grounding in music from the Choir Master.

Their final choice was a piece of music that they both enjoy an organ voluntary by Lefebure-Wely: Sortie in E flat.

They were asked if they could take two books on their desert island beside the Bible and the Works of Shakespeare what other books would they take with them – Gill replied a large, detailed World Atlas and Richard the Works of Alan Bennett.

What luxury would you take - a comfortable camp bed, table and chairs.

Don concluded by thanking Gill and Richard for taking part and being our castaways and this was echoed by all present. Linda thanked Don for hosting the evening in Ray Speakman's absence (Ray was recovering from a knee replacement operation) and Ray for all his preparation before the event and Rev Paul for all his help and support in providing the technical backup, without Paul this evening would not have been possible.

The meeting ended with the closing music "By the Sleepy Lagoon" BBC version.

At our September meeting we welcomed Ray Sturdy who gave us an interesting talk on the "Rise and Fall of Witley Court". Witley Court was built for the Foleys in the seventeenth century . The Foleys sold the Witley estate to William Ward later to become the 1st Earl of Dudley. During the 1st Earl of Dudley's time the court was remodelled in the Italianate style used at Osborne House. Lord Dudley's immense wealth was generated from Black Country coal mines, and this enabled the family to live an opulent lifestyle, hosting many lavish house parties attended by the Prince of Wales (later King Edward VII) and his circle. On the death of the 2nd Earl of Dudley's wife in 1920 the Witley Court estate was sold to Sir Herbert Smith (known as Piggy Smith) a carpet manufacturer. In 1937 a devastating fire destroyed much of the house and it has remained a ruin to this day.

Not to be missed in the gardens is the spectacular restored Perseus and Andromeda fountain. Witley Court is now in the care of English Heritage .

We look forward to welcoming Pam and David Humphries to our next meeting on **Wednesday 4th October** speaking on 'A ride around the famous Outer Circle (No 11)'. **Visitors are always most welcome to any of our meetings.**

HELPING PEOPLE IN NEED

About four months ago I volunteered to help at the Food Bank in Tyseley, Birmingham. Tyseley is the main warehouse where they divide the food into bags, which is then distributed to other sites.

There are six permanent staff and about twenty volunteers in the warehouse and I really enjoy the great company, teamwork and friendship.

I have quite a busy life so I go when I have a few hours spare.

On arrival, I am given a list which states bags for one person, two people or up to five and whether it is Halal or not. I collect the appropriate food from shelves and put it into the bags. I fill a trolley and take them to delivery pick up point.

Food parcels are also delivered to discharged hospital patients who live alone.

An item of food is handled eighteen times from shop to delivery!



The material home-made bags are great for this work as they are so strong and many of them are returned for reuse, so thank you and please keep making them. The patterns and material are at the back of St James Church. If you can't sew or have no sewing machine just cutting them out would really help.

There are many jobs at the warehouse and this is just an insight into my role there.

Thanks for all the donations and public support as without them the Food Bank would not be as successful as it is.

Last month 1209 adults and 1779 children were fed!

Pam Owen

FOOD BANK: in addition to their usual call for donations particularly of tinned fruit and tinned vegetables (but not baked beans!) I would like to add another request.

Last Christmas at St. John's satellite Food Bank where David and I help out occasionally, the curate had the wonderful idea of putting out a present table on the Wednesday before Christmas. Anyone who came in for a food parcel could look at the items on this table and choose one present per child in their household - we knew exactly how many children there were because that was noted on their Referral Forms.

HELPING PEOPLE IN NEED *continued*

The curate's daughter and her best friend (both aged 8) stood for two hours wrapping the gifts in Christmas paper so the present was ready to give - super little girls! The gifts were not always new but always in very good condition: they ranged from a packet of balloons to a box of Duplo and a jigsaw. They were aimed mainly at the younger ages, but we had some toiletries for the teenagers (male and female) and warm mittens and hats for the adults. (I know I said it was one present per child but ... we even put out small packets of biscuits and cakes).

So - that's what I am scrounging this month – for items that could go on the Present Table. What have you tucked away in your present drawer that you could spare? What have your children/grandchildren finished playing with that I could have? What raffle prize did you win that you don't really know what to do with?

I know, I know, I am always on the scrounge - but you are always so kind to troubled folks just a few miles down the road.



Thank you once again for all the cutlery, mugs and bowls which I have passed on for the young men in the ex-prisoner's hostel who come for food parcels.



GrowBaby: this is the charity operating out of St Michael's Church in Redstone Farm Road. It caters from maternity to children aged five; clothing, bedding, cots, nappies etc. I pass onto them any surplus items from the Narthex and ADAVU. It is extremely busy, with mothers queuing each Tuesday morning for items to help them cope. No referrals or appointments are necessary.

I know that over four years ago I announced that I was retiring from scrounging etc. but somehow I just can't say no when I know jolly well that there's a good home nearby for it!

Once again, thank you to you all for your incredible support to folks you are unlikely to meet who are so very grateful.

Elizabeth Paice



EARLSWOOD
GARDEN & LANDSCAPE CENTRE

**OPEN
7 DAYS
HOME
DELIVERY**

Manufacturers of

**SOLIHULL'S BIGGEST ONE-STOP
GARDEN & LANDSCAPING SHOP**

**FENCING • GATES • SHEDS • PATIO PAVING
DECORATIVE AGGREGATES • PLANTS • SHRUBS
TREES • TOOLS • COFFEE SHOP and much more!**

PLUS! Over 17 businesses ranging from a gen't's barbers to a dog groomer!

JOIN OUR
FREE **PRIVILEGE CLUB**
AND **SAVE 5% ON ALL PURCHASES***
SIGN UP TODAY AT www.earlswoodglc.co.uk

*Excludes special offers, multi-buys, clearance & bespoke products, delivery charges and installation services.
Full terms and conditions are available in store and online at www.earlswoodglc.co.uk/privilegeclub



Fencing & Gates



**Sheds &
Garden Buildings**



EARLSWOOD GARDEN & LANDSCAPE CENTRE
FORSHAW HEATH ROAD, EARLSWOOD, SOLIHULL, B94 5JU
t. 01564 702 314 www.earlswoodglc.co.uk

Follow us: @EarlswoodGLC [f](#) [t](#) [i](#)

OPEN 7 DAYS
Mon to Fri 7:30am - 5pm
Saturday 8am - 5pm
Sunday 10am - 4pm

GOD SPEAKS TO ME

I recently attended a course where we were asked to read Psalm 40 in preparation for a discussion during the morning.

I only really got as far as the first two lines as I immediately related to them -
"I waited patiently for the Lord – and he heard my cry".

Of course, I had to read all the Psalm but I kept coming back to these two lines.

Well, a couple of nights after this as I was bringing my concerns to God he answered me – not what I wanted to hear, but still do we ever?

He said to close the door and I will open another.

How long Lord for I do not have a lot of time left to do your work?

Needless to say, I was upset as it was not what I wanted to hear but God does work in mysterious ways to bring about his work.

So let us Bless the Lord as I await patiently, or to be precise impatiently, for Him to lead me to pastures new.

Margaret

CHRISTMAS GIFTS FOR ADAVU

For several years now Shirley Parish have collected gifts for the clients of ADAVU, including a number of children, so that they can each have a bag of presents at Christmas.

Last year we worked together with Shirley Methodist Church and the result was magnificent – a bag for each of their clients with some additional chocolate and biscuits that they were able to take away from the party that ADAVU held a few weeks earlier.

We are hoping to do the same again.

A tree will go up at the back of St James Church on 4th November decorated with gift tags for the things we are hoping to include in the present bags. Hopefully people will take them and having bought that gift bring it back wrapped and with the label now stuck on the outside. (It isn't a problem if things come in unwrapped as the Methodist Church has a team of super-efficient present wrappers). I'm hoping that most things will come back on a Sunday up to and including 26th November. This gives time to collect everything together and to the staff of ADAVU for them to distribute by Christmas.

Please have a look when the tree goes up to see whether you can help with a gift.

If you have any queries please contact Sarah on 0121 682 1525.



MOBILE HAIRDRESSER


Fully qualified **LADIES AND GENTLEMENS** Hairdresser

Available for appointments in the comfort
of your own home

Please Telephone **CLAIRE** on

01564 794684 or 07931 751 451


WHAT'S ON



Shirley Parish


JIMMY TOTS FOR PRE-SCHOOLERS AND THEIR CARERS

STORIES, GAMES AND SINGALONGS!
EVERY FRIDAY 10AM-11.30AM



£2 Per Family
Come when you want, pay as you go

CHURCH HOUSE B90 2AX
0121 745 8896




Monday 9th October
10.30am - 12 noon
at St John's Church



*All will be
welcome*

Hot drinks, home-made cake and company

Every Tuesday Morning in Church House

10am until 11.30am



WHAT'S ON



Saturday 7th October
10.30am - 12 noon
in Church House

Come and support the 'Friends of St James':

Coffee 
Morning

Home-made cakes ~ Bric-a-Brac ~ Books ~ Raffle



Concert on
Saturday 14th October
at 7.30pm
in St James Church



Tickets £8
(includes refreshments)
from the Parish Office

*Dates for
 your
 diary.....*

Thursday 7th December to
Sunday 10th December
CHARITY CHRISTMAS
TREE FESTIVAL
Saturday 9th December - Craft Fair

BILL BOYCE DECORATORS

We have been a family run business since 1982 and we pride ourselves on the quality of our work.

We carry out private work but also carry out work in offices, schools, restaurants and shop premises.

Visit <https://billboycedecorators.co.uk> to find out more

Telephone ~ 0121 744 0040

or 07976 810680 (Bill)

or 07966 275134 (Dan)



89 Union Road
Shirley, Solihull
B90 3BY

Email ~ sandraboyce61@hotmail.com



Bastock & Bruce Ltd

F U N E R A L D I R E C T O R S

*If Knowle is difficult to get to,
we will happily visit you at
home or you can meet Bruce
at any of the Bastock family
funeral homes.*

A partnership between C. Bastock Ltd and Bruce Bragg

Bruce is now the only remaining member of the Bragg family still in the industry following the sale of the Bragg family business in Shirley. This partnership brings a family business to Knowle with generations of experience ensuring the truly personal service you would expect from an independent business.

Knowle Funeral Home

Brisker Court, 1685, High Street, Knowle. B93 0LN

01564 33 5577 (24 hour)

Serving all surrounding areas



www.bastockandbruce.co.uk

HOLY YEAR WALKING PILGRIMAGE TO SANTIAGO DE COMPOSTELA - Part 5

In Parts 1 - 4 (May - September 2023 Parish Magazines) I related our pilgrimage route from Leon in Northern Spain towards the shrine of St James the Great in Santiago de Compostela. There were three of us: my husband Dave, myself and our friend Revd Colin Jones. The distance to be covered was 302 kilometres and we expected it to take us eleven days.

From our Casa Rural, which was a comfortable farmhouse in Galicia, we set out at 8.10am, having heard the first pilgrims leave at 5.30am. On this particular day we hoped to get to Palas de Rei, as Colin had to catch a plane in a few days' time in order to go to a conference in London. We realised that today we would have to cover 40k if we were to stay together and get to Santiago. Colin managed to negotiate with the proprietor of the Casa Rural to have our rucksacks transported to our destination as this was a particularly steep part of the route and seemed the only sensible way to do it. He also rang ahead to find suitable accommodation at Palas de Rei. We carried small rucksacks as daypacks and set off. It seemed such a relief at first to be without our big rucksacks. Dave then began to miss his and said he didn't feel he was a true pilgrim without it.



There were few diversions on the route but one town that was particularly stunning was Portomarin. The original town was flooded when the river Mino was dammed up to build the reservoir in the 1960's and the new town was built on the hill above it. The fortified Romanesque church of St. Nicholas was dismantled stone by stone and rebuilt in its present town centre position. The portal is by Master Mateo who also built the Portico de la Gloria in the cathedral at Santiago; there is a statue of him there, near to the entrance. One of the bakeries in Portomarin is famous for its 'Torta de Santiago' an almond tart decorated with the cross that is a

combination of a sword and a shepherd's crook. The reservoir is a magnificent sight inviting one to drop down on its edge and just sit and look, but thinking of the 40k, we had to press on.



We saw very few walking pilgrims and it was a long hard fairly uneventful walk.

I made few notes as it was so gruelling.

... continued over the page

HOLY YEAR WALKING PILGRIMAGE TO SANTIAGO DE COMPOSTELA *continued*

We arrived in Palas de Rei at 7pm and managed to find our accommodation and were relieved to find our rucksacks had been safely delivered there. We relaxed and enjoyed steak casserole followed by cheese. Palas de Rei itself does not have any major features of interest except an 11th century West Door to its church.

We left at 7am next day and trekked on for four and a half miles through winding lanes and small villages. Soon we came to a private pilgrim Refuge. Other pilgrims were just leaving and we went in for breakfast. It was a spotlessly clean place with a wonderful atmosphere. There were large communal tables where pilgrims sat, drank mugs of tea and coffee and ate buttered toast with jam, which was in large generous pots. With delight we sat down and joined in, it was all so inviting and friendly. We had a chat with the owner and complimented him on the standard of the Refuge, having seen the sleeping area and bathroom facilities. It was a place in which one would be happy to stay.

As you walk the pilgrim route you get to recognise faces and I noticed that some were beginning to look truly weary. There are some who sleep out at night and after a while it begins to show. I particularly noticed a South Asian girl outside the Refuge. She was often ahead of me and walked well. On this particular morning she looked very tired, she was also very thin. I wondered whether she was getting enough to eat and I was concerned as to whether she had perhaps run out of money. These thoughts are often challenges and it is difficult to know when to make enquiries into another person's life. However, a few other people joined her and she went off smiling.

The first church we came to was at Leboreiro; the church of Santa Maria. It is one of the first churches on the route that depicts the coronation of the Virgin Mary. We came to the outskirts of the town of Melide and entered a church which has a crucifix showing Christ reaching down with one hand to help the pilgrims. I had never seen anything like it before and in our state of heat and exhaustion it was good to look upon. We journeyed on into the centre of Melide. A regional speciality here is pulpo (octopus). It is spiced and served on a wooden platter with bread and Ribeiro wine; a dish for the brave perhaps.



We took an early lunch - now for a new experience ... peppers of Padron. These are green and small, well salted and delicious. That's all one needs, a plate of peppers, some bread and a cup of wine 'for the stomach's sake'. Nicely refreshed we continued on and came to a small church of St. James. There we managed to get our pilgrim passports stamped and took a photo of the statues of St. James and St. Roque.



St. Roque is the pilgrim saint from Montpellier in France. After a pilgrimage to Rome he devoted his life to caring for plague victims, but withdrew to live in a forest when he contracted a disease which left him with an unsightly sore on his left thigh. He has his cloak turned back, revealing the wound, to warn people to keep away from him. He is accompanied by a faithful dog, with a crust of bread in its mouth, bringing the saint his daily rations. There are often these encouragements on the way to remind one that God is there wherever we are and in whatever circumstances. We were grateful for the stop and after some reflection in the church set off again.

Hills upon hills followed and we passed a Medieval pilgrim hospital, now a Refuge, and soon came to the last and steepest hill leading into Arzua. This is a small town famous for its cheeses. We found an excellent Pension with wonderful views. It was the time of year for young wine and there were several establishments which specialised in serving it in small crock dishes. For those into poetry I notice that Horace (Rome, first century B.C.) in 'Quid Dedicatum' writes of pouring 'young wine from a dish', it was obviously popular in those days as well. We had a superior cup before our meal as we wandered around the town, and Dave and Colin repeated the procedure at our next stop before we had our meal of caldo, steak casserole and chicken and some of that special Arzuan cheese. The distance today was 28k, with rucksacks of course!

To be continued...

Reverend Theresa Jones



SHIRLEY COMMUNITY CENTRE
Stratford Road, Opp. Longmore Road
INDOOR SHORT MAT BOWLING



Wednesdays 2pm, Fridays 10am & Tuesdays 7pm
Wednesday & Friday No Experience Necessary as Tuition Given
Tuesday League Bowling

COME AND MAKE NEW FRIENDS

THIS MONTH'S CROSSWORD

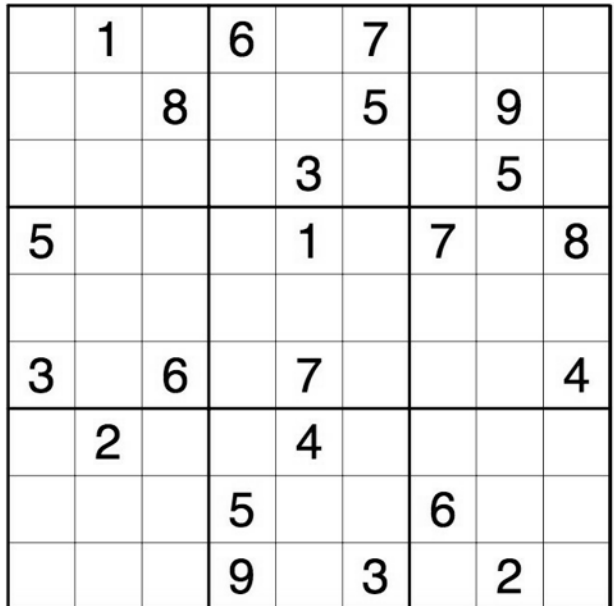
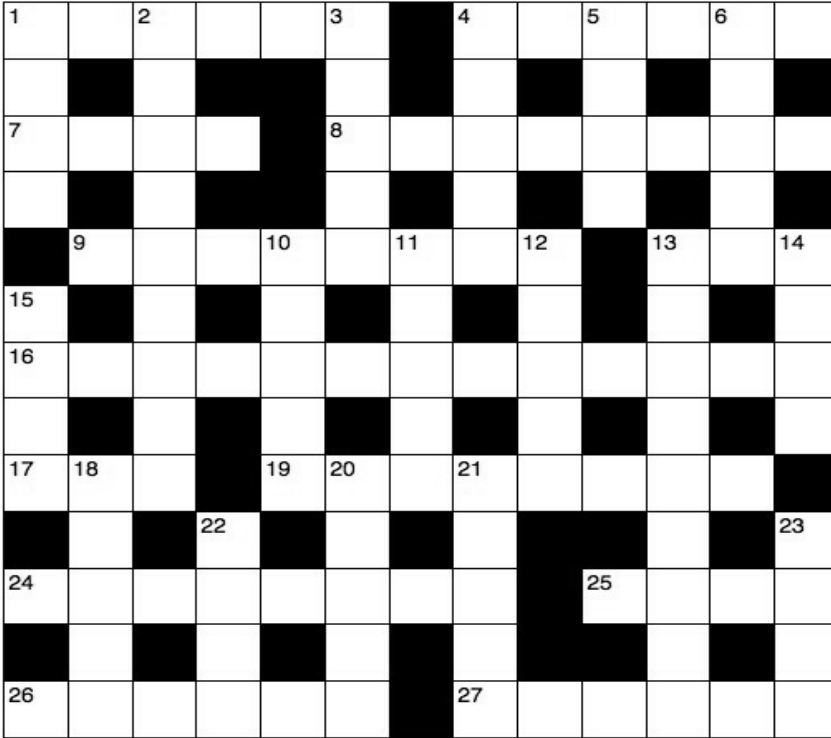
Across

- 1 He must be 'the husband of but one wife and must manage his children and his household well' (1 Timothy 3:12) (6)
- 4 'For we must all — before the judgement seat of Christ' (2 Corinthians 5:10) (6)
- 7 'They reeled and staggered like drunken men; they were at their — end' (Psalm 107:27) (4)
- 8 See 19 Across
- 9 It concerned who among the disciples would be the greatest (Luke 9:46) (8)
- 13 Formed by the Jews in Thessalonica to root out Paul and Silas (Acts 17:5) (3)
- 16 'He has sent me to bind up the — ' (Isaiah 61:1) (6-7)
- 17 Moved rapidly on foot (Matthew 28:8) (3)
- 19 and 8 ' — a great company of the — host appeared with the angel' (Luke 2:13) (8,8)
- 24 Hindrance (Romans 14:13) (8)
- 25 Comes between Luke and Acts (4)
- 26 Empower (Acts 4:29) (6)
- 27 'Get these out of here! How dare you turn my Father's house into a — !' (John 2:16) (6)

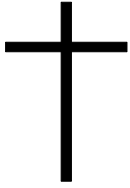
Down

- 1 Sunrise (Psalm 119:147) (4)
- 2 The part of the day when Cornelius the Caesarean centurion had a vision of an angel of God (Acts 10:3) (9)
- 3 He was one of those who returned with Zerubbabel from exile in Babylon to Jerusalem (Nehemiah 7:7) (5)
- 4 'No one can see the kingdom of God unless he is born — '(John 3:3) (5)
- 5 Animal hunted or killed as food (Ezekiel 22:25) (4)
- 6 'He encouraged them — — remain true to the Lord' (Acts 11:23) (3,2)
- 10 Ruses (anag.) (5)
- 11 Jewish priestly vestment (Exodus 28:6) (5)
- 12 Visible sign of what had been there (Daniel 2:35) (5)
- 13 This was the trade of Alexander, who did Paul 'a great deal of harm' (2 Timothy 4:14) (9)
- 14 'This is my — , which is for you; do this in remembrance of me' (1 Corinthians 11:24) (4)
- 15 One of Noah's great-great-grandsons (Genesis 10:24) (4)
- 18 Traditionally the first British Christian martyr (5)
- 20 Relationship of Ner to Saul (1 Samuel 14:50) (5)
- 21 Jacob had one at a place he named Bethel while on his way to Haran, fleeing from Esau (Genesis 28:12) (5)
- 22 Bats (anag.) (4)
- 23 'You strain out a — but swallow a camel' (Matthew 23:24) (4)

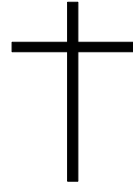
THIS MONTH'S CROSSWORD & SUDOKU



Answers are on page 27



Monumental Masons



BANNOCKS OF SOLIHULL

Five generations of quality manufacturing
and service from a family business.

All aspects of Monumental Masonry

PERSONAL ATTENTION ~ ADVISORY SERVICE
LARGE DISPLAY

117 Streetsbrook Road, Solihull B90 3PF
(Opposite Robin Hood Cemetery)

Tel: 0121 744 1727

www.bannocksmemorials.co.uk



C Bastock Ltd

FUNERAL DIRECTORS

Independent Family Owned Funeral Directors since 1856

Shirley Funeral Home

100, Stratford Road
Shirley. B90 3BH
0121 726 2626

Solihull Funeral Home

67-71 Warwick Road,
Solihull. B92 7HP
0121 706 4040

Yardley Funeral Home

112 Church Road,
Yardley. B26 8UX
0121 784 3230



Whether you have a traditional, contemporary or eco funeral in mind our family are here to help you. Our dedicated team will guide you through the choices and decisions to ensure a unique and befitting funeral.

Specialist provider of Pre-Paid Funeral Plans
Peace of mind with secure affordable options

Free, no obligation help and advice.

www.cbastock.co.uk

OCTOBER WORDSEARCH - ST LUKE

To St Luke, whose feast-day is 18th October, we owe a beautifully written gospel as well as the Book of Acts. He was a Greek physician and faithful travelling companion to St Paul. Under house arrest near the end of his life Paul noted, 'only Luke is with me'. Luke's gospel focuses on the compassion of Christ, and offers us moving parables, such as the Good Samaritan and Prodigal Son. Women figure more prominently in Luke's gospel than in any other: look out for the extended story of the Virgin Birth, and stories of Mary, Elizabeth, and the woman who was a sinner. His gospel also features more poor people, more lepers, more 'sinners', who are all shown to be 'inside' the love of Christ. In Acts, Luke skilfully links sacred and profane history, as subsequent archaeology has shown. He tells of how the early Christians moved away from Jerusalem into the pagan world, and especially on to Rome.



Answers are on page 27

J	W	L	U	A	P	R	R	O	N	A	A	S
O	O	L	R	P	R	O	D	I	G	A	L	C
E	M	N	U	E	A	R	L	Y	I	N	R	C
M	E	P	C	K	M	R	E	E	S	S	D	N
O	N	R	H	M	E	L	A	S	U	R	E	J
R	R	O	R	Y	T	S	A	B	T	E	R	M
O	O	F	I	A	S	M	U	V	L	P	C	I
O	G	A	S	N	A	I	I	O	N	E	A	P
P	T	N	T	R	A	R	C	O	H	L	S	R
G	N	E	I	M	G	P	B	I	R	T	H	I
E	N	T	A	I	P	Y	M	P	A	G	A	N
O	A	O	N	A	R	D	O	O	G	N	B	G
N	O	I	S	S	A	P	M	O	C	A	O	A

ARREST
 BIRTH
 CHRISTIANS
 COMPANION
 COMPASSION
 EARLY
 GOOD
 HOUSE
 JERUSALEM
 LEPERS
 LUKE
 PAGAN
 PARABLES
 PAUL
 PHYSICIAN
 POOR
 PRODIGAL
 PROFANE
 ROME
 SACRED
 SAMARITAN
 SON
 VIRGIN
 WOMEN



The Roof Repair Co.

<https://www.roofingandgutteringservices.co.uk>

24 hour
service

From A Minor Repair To A New Roof

- ✓ NEW ROOFS
- ✓ NEW FLAT ROOF SYSTEMS
- ✓ RIDGE TILES REPOINTED & REBEDDED
- ✓ GUTTERING - UPVC CLADDING
- ✓ NO MONEY UP FRONT
- ✓ TOP QUALITY MATERIALS
- ✓ SENIOR CITIZENS DISCOUNTS

Guttering
Repaired &
Cleaned Out
from £25



Repairs
from as
little as
£35

FREE QUOTATION Without Obligation

FOR IMMEDIATE EMERGENCY RESPONSE

0121 604 2104 / 07956 228 842

Thomas Bragg & Sons Funeral Directors

We create every
funeral individually,
just for you.

- 24-hour service
- Bereavement advice
- Transparent pricing
- Home visits
- Private chapels of rest
- Floral tributes
- Memorial masonry
- Prepaid funeral plans

Thomas Bragg & Sons Funeral Directors are here to support and guide you. We offer a friendly, professional service to families.

Call us for immediate support, advice or a home visit. We are here to help 24 hours a day.

www.thomasbragg.co.uk

Shirley

0121 744 1428

562 Stratford Road, B90 4AY

Knowle

01564 773 610

1682 High Street, B93 0LY

 Funeral Partners

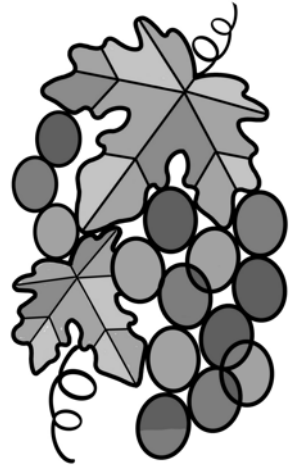


PUZZLE ANSWERS

2	1	5	6	9	7	8	4	3
7	3	8	4	2	5	1	9	6
9	6	4	1	3	8	2	5	7
5	9	2	3	1	4	7	6	8
4	7	1	8	5	6	9	3	2
3	8	6	2	7	9	5	1	4
6	2	9	7	4	1	3	8	5
1	4	3	5	8	2	6	7	9
8	5	7	9	6	3	4	2	1

D	E	A	C	O	N		A	P	P	E	A	R	
A		F				E		G		R		L	
W	I	T	S			H	E	A	V	E	N	L	Y
N		E				U		I		Y		T	
	A	R	G	U	M	E	N	T			M	O	B
E		N		S		P		R		E		O	
B	R	O	K	E	N	H	E	A	R	T	E	D	
E		O		R		O		C		A		Y	
R	A	N		S	U	D	D	E	N	L	Y		
	L		S		N		R			W		G	
O	B	S	T	A	C	L	E			J	O	H	N
	A		A		L		A			R		A	
E	N	A	B	L	E			M	A	R	K	E	T

J	W	L	U	A	P	R	R	O	N	A	A	S
O	O	L	R	P	R	O	D	I	G	A	L	C
E	M	N	U	E	A	R	L	Y	I	N	R	C
M	E	P	C	K	M	R	E	E	S	S	D	N
O	N	R	H	M	E	L	A	S	U	R	E	J
R	R	O	R	Y	T	S	A	B	T	E	R	M
O	O	F	I	A	S	M	U	V	L	P	C	I
O	G	A	S	N	A	I	O	N	E	A	P	
P	T	N	T	R	A	R	C	O	H	L	S	R
G	N	E	I	M	G	P	B	I	R	T	H	I
E	N	T	A	I	P	Y	M	P	A	G	A	N
O	A	O	N	A	R	D	O	O	G	N	B	G
N	O	I	S	S	A	P	M	O	O	A	O	A



Tudor Grange Primary Academy St James
Nurture, Learn, Achieve

Principal - Mrs H Lynch
 For details about the school contact the PA to the Principal - Mrs G Giles

Tudor Grange Primary Academy St James, Halifax Road, Shirley, Solihull B90 2BT
 Phone: 0121 744 7897 office@stjames.tgacademy.org.uk www.stjames.tgacademy.org.uk

Age is just a number in our care homes

Whether you're 65 or 105, you're still you.
Up for new things or loving your old
favourites. Find a new place to enjoy
every day with Bupa care homes.



This is
health

Bupa care home near you

Nursing | Residential | Short stay



9.4

carehome.co.uk
Review Score
59 reviews

The Priory Care Home
1 Shelly Crescent, Monkspath,
Shirley B90 4XA

The Review Score is based on the quality and
number of independent reviews this home has
received on carehome.co.uk in the last two years,
at the time of going to print.

All types of funding welcome

No health insurance needed



Call our helpful care team
to start your search

0121 756 4683

bupa.co.uk/care-services

Lines are open 8am to 6.30pm Monday to Friday,
9am to 12.30pm Saturday. Closed Sundays and
bank holidays. Calls are charged at no more than
local rate and count towards any inclusive minutes
from mobiles. We may record or monitor our calls.



Care Home
Provider of the
Year 2022

012685 JAN23

COZY TOES

Bev Hughes DipCFhp

Mobile Foot Health Practitioner

**07764 636468 or
0121 451 3586**



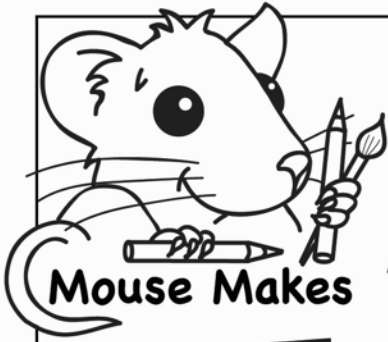
**OFFERING A FRIENDLY,
RELIABLE, PROFESSIONAL
SERVICE AT AFFORDABLE PRICE**

Over 65 £20.00 per session

Under 65 £25.00 per session

TREATMENT INCLUDES:-

- ✓ FREE CONSULTATION
- ✓ TOENAILS CUT &
- ✓ THICKNESS REDUCED
CALLOUSES REMOVED
- ✓ CORNS & VERRUCAS
TREATED
- ✓ DIABETIC FOOTCARE



What food did God supply for his people in the wilderness?
 _____ and _____

Numbers 11:7-9 and 31

After Elijah came to visit, what never ran out?
 _____ and _____

1 Kings 17:14

What food did the ravens feed Elijah?
 _____ and _____

1 Kings 17:6

What food did John the Baptist eat in the wilderness?
 _____ and _____

Matthew 3:4

What did the boy give Jesus to feed 5,000 people?
 Five _____ and two _____

John 6:9

FIND THE BIBLE VERSE

Change each letter in this bible verse to the letter **before** it in the alphabet.

NBO TIBMM OPU
 MJWF PO CSFBE
 BMPOF, CVU PO
 FWFSZ XPSE UIBU
 DPNFT GSPN UIF
 NPVUI PG HPE.

NBUUIFX 4:4

CONNECT THE BIBLE FOOD PAIRS

MANNA	HONEY
OIL	WINE
WATER	FISH
LOCUSTS	QUAIL
LOAVES	FLOUR

What drink ran out at the wedding?

and what did Jesus use to make more?

John 2:3 and 7

DID YOU KNOW?

As Lot escaped Sodom with his family an angel told him not to stop or look back, but Lot's wife did look back and became a pillar of salt.

READ Genesis 19 v15-26

E B R E A D H O N E Y Q J S F
 L O A V E S G Q W A T E R C I
 M Q I W M F R U I T F I S H G
 E U S H A L A A N O L I V E S
 A I I E N O I I E G R A P E S
 T L N A N U N L O C U S T S Y
 M U S T A R D E I H D A T E S
 E V E G E T A B L E S A L T H

Find the words below and the answers to the questions all in the word search

- OLIVES • CHEESE
- FIGS • DATES
- MUSTARD
- RAISINS • WHEAT
- SALT • GRAIN
- FRUIT • GRAPES
- VEGETABLES

FROM THE PARISH REGISTERS - AUGUST 2023



Baptisms

6th	Hudson Paling
13th	Freya Emery
20th	Caide Carpenter Jude Browne Delilah Browne

Wedding

17th	Zoe Minchin and Christopher Bennet
------	------------------------------------

Funeral

2nd	Doris Hyde
-----	------------

PRAY WITH US



Give to us your people, living God,
 A renewed faith and a bold vision
 that we may proclaim
 the Good News of your Son
 with faith that your kingdom will come,
 with hope for our community
 and with love for Him
 who died and rose again
 to save us, Jesus Christ our Risen Lord
 Amen

God of Mission, who alone brings growth to your Church,
 send your Holy Spirit to give vision to our planning,
 wisdom to our actions, and power to our witness.
 Help our church to grow in numbers, in spiritual commitment to you,
 and in service to our local community.
 Through Jesus Christ, our Lord.
 Amen

SHIRLEY PARISH GUIDE *continued*

READERS

Kate Day

email: kate_day@me.com

Tel: 0121 537 9672

Gill Gough

email: g.gough@hotmail.co.uk

Tel: 0121 603 2636

Sarah Penfold

email: sarahpenfold@blueyonder.co.uk

Tel: 0121 681 1525

Denise Smith

email: deesmith1181@hotmail.com

Tel: 07815 193892

CHURCH WARDENS

Parish Wardens

Linda Pitt Tel: 0121 744 6777
email: lindaalisonpitt@gmail.com

Gill Hanton Tel: 0121 733 2347
email: gill.hanton@btinternet.com

Deputy Wardens - St James the Great Church

Kate Crocker John Richards
Tel: 07562 664163 Tel: 07941 634971

Deputy Warden - Christ the King Church

Denise Smith
Tel: 07815 193892

Deputy Warden - St John the Divine Church

Linda Alford
Tel: 0121 430 4785

SAFEGUARDING

Sue Harries
Tel: 07977 012753 or 0121 745 8896 (c/o Parish Office)

***As you all know we are a parish that takes safeguarding very seriously.
Everyone who comes to our churches deserves to feel included and
very importantly, safe.***

***If anything is concerning you, please talk to Sue Harries, Safeguarding Co-ordinator,
or Paul Day, Vicar.***

We must all look after one another.



Glazing and Locks

- Misted/broken double glazing replaced
- All double glazing repairs
- Over 25 years experience
- City & guilds qualified
- Police and Age Concern registered
- Full locksmith service
- Key cutting
- Windows, door realigned

Contact Jason on 07789761412

MOBILE HAIRDRESSER - DAWN



Ladies & mens, fully qualified & insured
Covid Safe, over 30 years experience

Reduced prices for OAPs

Telephone: 0121 744 0421 or 07761 473524

P STEPHEN & PHILIP PAINTER

FUNERAL DIRECTORS
INDEPENDENT & FAMILY-OWNED



The only funeral homes still owned by
The Painter Family. Providing a dignified & personal
service across Birmingham & Solihull

HALL GREEN OFFICE

192 ROBIN HOOD LANE
HALL GREEN
BIRMINGHAM B28 0LG

TEL: 0121 777 4300

ACOCKS GREEN OFFICE

213 YARDLEY ROAD
ACOCKS GREEN
BIRMINGHAM B27 6LZ

TEL: 0121 707 1172

WWW.STEPHENANDPHILIPPAINTER.COM