

# Shirley Parish Magazine

December 2022

SHIRLEY PARISH



KNOWING CHRIST  
MAKING HIM KNOWN

# SHIRLEY PARISH GUIDE (see also inside the back cover)

CLERGY

**Vicar - Reverend Paul Day**

18 Widney Lane, Solihull B91 3LS  
email: pgday@hotmail.co.uk

Tel: 0121 537 9672

**Reverend Wendy Martin**

email: wendy164@btinternet.com

Tel: 07543 829571

**Reverend Wendy Carter**

email: revwendy@sky.com

Tel: 0121 744 6315

**Reverend Nick Ball**

email: nicholaseball@hotmail.com

Tel: 0121 243 1336

**Reverend Dr. Theresa Jones**

email: theresaj1@btinternet.com

Tel: 01564 822687

**Parish Office, Church House, Church Road, Shirley, B90 2AX**

Telephone: 0121 745 8896

Email: admin@shirleyparish.co.uk

Parish Website: <https://www.shirleyparishb90.co.uk>

Social Media: [twitter.com/@ParishB90](https://twitter.com/ParishB90)

[facebook.com/@AdventureinFaithB90](https://facebook.com/@AdventureinFaithB90)

YouTube: <https://www.youtube.com/ShirleyParishB90>

**PARISH OFFICE**  
is open Monday to  
Friday (except Bank  
Holidays)  
**9.30am - 12.30pm**

## OUR PARISH PRAYERS



Give to us your people, living God,  
A renewed faith and a bold vision  
that we may proclaim  
the Good News of your Son  
with faith that your kingdom will come,  
with hope for our community  
and with love for Him  
who died and rose again  
to save us, Jesus Christ our Risen Lord  
Amen

God of Mission, who alone brings growth to your Church,  
send your Holy Spirit to give vision to our planning,  
wisdom to our actions, and power to our witness.  
Help our church to grow in numbers, in spiritual commitment to you,  
and in service to our local community.  
Through Jesus Christ, our Lord.  
Amen



# Follow The Star

## THE GREAT INVITATION

This is the Church of England's theme for 2022.

We hope that everyone will share the joy of gathering together to celebrate the birth of Jesus with their family, friends and neighbours - especially after two years where this has been impossible for many.



Follow The Star: The Great Invitation consists of twelve reflections from a range of contributors including the Archbishops who share personal stories exploring themes of invitation. Starting on Christmas Eve and continuing daily (Monday to Saturday) until the Epiphany (6th January), these reflections will help you make space this Christmas.

On each of the twelve days, a different contributor will share something that speaks of a Christmas invitation for them, bringing the theme to life through a mixture of personal story, Bible reading, reflection and challenge.

These reflections will be available via:

Email

App with accompanying resources for children and families

Printed Booklets

<https://www.churchofengland.org/follow-star-great-invitation/follow-star-great-invitation-advent-calendar>



## **JANUARY 2023 PARISH MAGAZINE**

PLEASE SEND INFORMATION & ARTICLES TO THE EDITOR BY

Monday 12th December 2022

ST JAMES THE GREAT CHURCH, Church Road, Shirley B90 2AX

CHRIST THE KING CHURCH, Widney Junior School, Clifton Crescent, Solihull B91 3LQ

ST JOHN THE DIVINE CHURCH, Tilehouse Lane, Tidbury Green, Shirley B90 1PW

EARLSWOOD

# Christmas Shop

**NOW OPEN**

**CHRISTMAS TREES • INDOOR & OUTDOOR LIGHTS • BAUBLES •  
HOME DECORATIONS • GIFTS • FOOD & DRINK and much more!**

FRESH-CUT  
*Christmas Trees*

Premium quality  
**Nordmann Fir Trees**  
(Non-Drop & Soft Touch)

Available to buy in store or online



FRESH-CUT  
*Handmade Wreaths*

Beautiful fresh Wreaths all  
lovingly handmade in store by our  
specialist plant team

Available to buy in store





**EARLSWOOD GARDEN & LANDSCAPE CENTRE**  
FORSHAW HEATH ROAD, EARLSWOOD, SOLIHULL, B94 5JU  
**t. 01564 702 314** [www.earlswoodglc.co.uk](http://www.earlswoodglc.co.uk)

Follow us: @EarlswoodGLC   

**OPEN 7 DAYS**

Mon to Fri 7:30am - 5pm  
Saturday 8am - 5pm  
Sunday 10am - 4pm

## Glazing and Locks

- Misted/broken double glazing replaced
- Police and Age Concern registered
- All double glazing repairs
- Full locksmith service
- Over 25 years experience
- Key cutting
- City & guilds qualified
- Windows, door realigned

**Contact Jason on 07789761412**

## THE FRIENDS OF ST JAMES 100 CLUB

### Congratulations to the November winners

£50 ~ Doug Golightly

£25 ~ Phillip Griffiths

Members are reminded that subscriptions for the next six months (December to May) are now due - £13 for six months - £26 for twelve months. Please make cheques payable to "Friends of St James 100 Club". Subscriptions may be handed into the Parish Office or posted to Lynda McPherson, 90 Dickens Heath Road, Shirley, B90 1RL.

## JOURNEY TO THE STABLE

From Monday 28th November until Friday 2nd December we will be welcoming the year 1 children from local primary schools to St James Church for Christmas drama and activities.

During that time the church will be closed other than to people taking part (this is as part of our commitment to safeguarding).

Please remember all those involved in your prayers.



## SOLVING PEST PROBLEMS OTHERS CAN'T - Since 2008

*From Solihull Redditch*

ALL PESTS: Rats, mice, squirrels, wasps, woodworm, rabbits, deer fencing, loft insulation clearance



LOCKY DEEMING

Wasps £67

Ants 2 visits £172

Moles 2 visits £118

Rodents 2 visits £176

\*quote 'Shirley Parish' for these prices

Find us on

Google



Visit our website



For Homes & Businesses

[www.pghbeegone.co.uk](http://www.pghbeegone.co.uk)

[sales@pghbeegone.co.uk](mailto:sales@pghbeegone.co.uk)

**0121 405 1478**



**PGH**<sup>®</sup>  
PEST PREVENTION

**Beegone**<sup>®</sup>  
LIVE BEE REMOVAL

Kings Norton, Birmingham, England

## PODIATRIST / CHIROPODIST

Surgery and Home Visits

**JONATHAN LEESE** D.Pod.M., M.Ch.S

**HCPC REGISTERED**

**Tel: 0121 733 1292**

193 Creynolds Lane, Shirley B90 4ES

## FAREWELL TO BISHOP DAVID

The Rt. Revd David Urquhart retired from the post of the Bishop of Birmingham on 18th October 2022, creating a vacancy in see.

The Archbishops' and Prime Minister's Appointments Secretaries consultation took place towards the end of November. This was in the form of a listening exercise in relation to the future ministry and mission of the next bishop and the Church of England.

From 19th October 2022, The Rt. Revd. Anne Hollinghurst, Bishop of Aston, Suffragan Bishop Church of England Birmingham, has been authorised by the Archbishop of Canterbury as commissary bishop or 'Acting Bishop of Birmingham'.



### Tudor Grange Primary Academy St James

*Nurture, Learn, Achieve*

**Executive Principal for Primary - Miss S Deakin**

For details about the school contact the PA to the Principal - Mrs G Miles

**Tudor Grange Primary Academy St James, Halifax Road, Shirley, Solihull B90 2BT**  
 Phone: 0121 744 7897 office@stjames.tgacademy.org.uk www.stjames.tgacademy.org.uk

## Mothers' UNION

Linda Pitt welcomed Jan Dalton to our November meeting for a craft session. All present were given a goodie bag, made up by Jan, containing all that was needed for us to make a Christmas Cracker, Christmas table favour and a Christmas gift bag. Jan talked us through each section of making them up.

After refreshments Jan concluded the session with a demonstration of table decoration ideas. It was a very happy afternoon, enjoyed by all. Thank you, Jan for making this possible.

Our Advent Service on **Wednesday 7th December** will be held in St James Church at 2pm when Margery Baldwin and Gina Atkinson will be enrolled as members.

The programme for 2023 is being finalised and will be circulated to members during December. Visitors are most welcome to any of our meetings.

*Susan Knight*

## A LETTER TO THE EDITOR

I wish to offer my thanks to all those involved in providing me each week, without fail, copies of the pew slips, readings for each Sunday of the year and the magazine.

In the October issue of the magazine Margaret Foreshew spoke of her delight in the book 'Sabbath'. I was so impressed by what she wrote that I was moved to obtain my own copy. Since then, it has been my daily companion.

Not only does this lovely book remind us of God's beautiful world but it guides us to set aside some time to reflect upon this and draws us into a time of quiet, peaceful silence in God's presence.

I am in my nineties, disabled and housebound – so thank you all for keeping me in touch with fellow Christians and the life at St James.

My love and prayers

*Pamela Clarke*

## OUR SUNDAY LUNCH CLUB

A huge thank you to the SLC team, those that have made donations, those that have volunteered future help and those that have made dishes for the meals. Also a big shout out to the lovely lads at our local butcher City Meats. They not only prepared the meat for us for the last meal but gave us a reduced price too! This is all very much appreciated and will enable us to continue the initiative. Power to the community!

*Jan Dalton*

## OUT OF THE SHED!

Well you know how it is in the shed. Over time things get put there unwanted, unused and unusable. The advent of a new kitchen spurred us into a clear out and we left on the pavement two broken lawnmowers, a very rusty barbeque and a bicycle.

They hadn't been out there long when the doorbell rang. 'I was just walking past and spotted them, can I have the bike?'. He wheeled it away. Not so easy as there was no air in either tyre.

A few weeks later we were getting out of the car when a man on a bike stopped, and crossed over the road to us. 'Thank you', he said. 'I've got that bike going again, and I'm using it'.

*Sarah Penfold*

## MEET SOME MORE OF OUR CHURCHYARD WORKING PARTY VOLUNTEERS



Kevin is the expert on lawnmowers and mixing the 2 stroke fuel for the trimmers.

He has been mowing for many years, an original!

Steve helping Colin cut the branches overhanging the Stratford Road.







Colin has been working in the churchyard for many years, I wonder how many times he has given the base of this tree a trim?

***You too can have good company if you join the working party on a Wednesday morning.***



*And Margaret Foreshew found this in an old magazine -*

The local vicar was walking to church when he saw old Tom at work in his garden. "Morning Tom" he said "your garden's looking very good". "Ahhh" Tom replied, "I puts a lot of 'ard work in 'ere, but its nice to see things doin' well". "Of course" continued the vicar "you could not have achieved these results without God's help". Tom eyed up the vicar, "No sir" he answered, "but he don't 'arf need my 'elp as well, 'cause you ought see'd it when he 'ad it on his own!".

## HELPING TO FEED THE HUNGRY THIS CHRISTMAS

You may have seen some of the headlines in the newspapers recently about the issues that Food Banks are facing due to soaring cost of living.

For the first time ever, Food Banks are giving out more food than is being donated. As a result, the Trussell Trust (that runs the Food Bank that we support in Tyseley) have launched their first ever Emergency Fund Appeal, to help meet the increased need and keep Food Banks going this winter.

As well as food donations, financial donations are being requested -

*£25 - can help provide emergency food, hot water bottles and essential toiletries for a person in financial crisis.*

*£75 - can help provide advice, information and support to worried families, helping them unlock additional income they're entitled to.*

*£150 - can help keep Food Banks going this winter, providing vital support to communities across the UK.*

In the short time it's taken you to read this, another emergency food parcel will have been handed out. That's one more person who'll be feeling reassured that they have enough food to feed their family tonight. But there are many more people who need our help. Your generosity will mean that our Food Bank will be able to meet the increased need for their services.

Details of how to donate can be found on the following website –

**<https://sparkhill.foodbank.org.uk/give-help/donate-money>**

Food collection baskets can be found at ASDA in Parkgate, Waitrose in Hall Green and Solihull, Tesco in Hall Green and Monkspath and at Sainsburys Marshall Lake.

The current urgently needed items are

UHT / powdered milk, squash/diluting juice, tinned fruit, tinned vegetables, pulses, meat soup, tinned fish, coffee, tinned tomatoes, pasta sauce, sponge puddings and instant mash.

Please help in any way that you can – however small. Thank you.



**BOURNVILLE VOICES**

# Candlelight Carols

POPULAR SONGS AND CAROLS IN  
MODERN AND TRADITIONAL STYLES

**12 DECEMBER 2022 | 8PM**

**ST JAMES CHURCH, SHIRLEY**  
CHURCH ROAD, B90 2AX

Entrance FREE, with retiring collection  
Interval refreshments



LAMPS

production

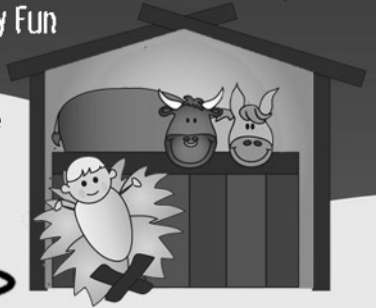
The Nativity, But Not AS You Know It...

# BABS OF BETHLEHEM

Fantastic Festive Family Fun

It's mayhem in Bethlehem on the night before the first Christmas and everyone is busy, especially industrious innkeeper, Babs.

Fabulous theatrical fun for ages 7 to 700.



Can Babs slow down long enough to find out what really matters?

**Sunday 18th December at 6pm at**

**Our Lady of the Wayside Catholic Church,  
566 Stratford Road, Shirley, Solihull, B90 4AY**

## CHRISTMAS CELEBRATIONS

What will you be remembering 2022 for?

- The year the Queen died
- The year of three prime ministers and four chancellors of the exchequer (at the last count)
- The year Russia invaded Ukraine
- The year of surging energy prices
- The year the climate emergency began to take centre stage
- The year when there was precious little good news

Perhaps we are thinking that with all the bad news around it will be hard to celebrate Christmas, hard to see the reality of ***Peace on earth and goodwill to all people***, hard to be full of joy.

But it is precisely because the world is in a mess that we need to celebrate Christmas.

Christmas – the time when we rejoice that God intervened in the madness and the mess of the world; where God himself came to live amongst us, born as a small baby in Bethlehem to show us how to live and to lead us back to himself.

I read this week that the favourite Bible verse across the world is the one from John 3:16 ***For God so loved the world that he gave his only Son, so that everyone who believes in him may not perish but may have eternal life.***

That verse sums up well why we should celebrate and rejoice at Christmas time.

So in the great way of things, it doesn't matter if you can't afford some of the things you have had in previous years. It doesn't matter if the turkey becomes a chicken (or even a vegetarian dish!). It doesn't matter if you don't have Christmas Crackers or endless mince pies. What matters is the eternal truth that the God who created the universe came to live amongst us in the person of Jesus. That is the reason for our celebrations. Happy Christmas to you all.

*Reverend Paul Day*



## OUR CHRISTMAS TREE FESTIVAL CHARITIES

**Donations received at this year's Memorial Service and Christmas Tree Festival will be shared between Practical Action and Building4Hope.**



Our goal is a world that works better for everyone. We help people find solutions to some of the world's toughest problems and put ingenious ideas to work so people in poverty can change their world.

A world where smallholder farmers can earn a decent living while working in harmony with the environment. Where parents can cook nutritious family meals without risking their health. And where businesses, schools and clinics have the electricity they need to help their communities succeed. Where people in slum communities and refugee camps live in safety and dignity. Women entrepreneurs have the confidence and the skills to build profitable businesses. And people on the front line of climate change can adapt to the challenges of extreme weather and thrive.

The communities we work with face significant challenges. The effects of climate change, environmental degradation, and the ongoing pandemic make this a critical time. But we see the opportunities for positive change and we know that our goals are not only achievable, but have never been more relevant.

Find out more at - <https://practicalaction.org>

*Photo credit: David Brazier/IWMI*

Image: with a unique combination of technology, skills and knowledge, communities in Zimbabwe can become resilient to climate change.



# BUILDING 4HOPE

We seek to bring hope by reaching and supporting disadvantaged young adults, focusing on construction skills training, help in gaining employment and life skills development.

Our primary focus is on disadvantaged young people who are NEET, i.e. not in Education, Employment or Training, aged between 16 – 25 years living in and around Birmingham and Solihull.

B4H is focused on candidates who generally have few academic qualifications and low self esteem. We start with one to one coaching then work towards National Qualifications including Carpentry and Joinery, Brick and Plastering/Rendering, Employability Skills and support for English and Maths. Along their journey, students will have passed H&S training and received their CSCS card and so become “construction site ready”.

*‘There is such a need out there. Young people’s lives are being ruined as we speak but Building 4 Hope is working, lives are being transformed and it’s an incredible privilege to be part of it’.*

We have identified that the two most important things many disadvantaged young adults who are NEET need are:

1. Qualifications and skills that allow them to find and secure employment.
2. Positive relationships with role models who were committed to their long-term health and well-being, who can advise, mentor and challenge.

This year, we believe that we can help more people as there is such a critical and desperate need out there.

We are continuously being contacted by individuals, Job Centres, Solihull Council, Birmingham City Council, Probation Services and through many other avenues. Our planning and strategy is in place for growth: we want and need to help more people but are also striving and focused to keep to one to one, small group teaching and learning and unique pastoral support as this is proving very successful. Every life transformed (and rescued) is happening due to your support. Building4Hope would not exist without everyone of us who work together in all sorts of ways.



Find out more at - <http://www.building4hope.org.uk>

St James Church, Church Road  
Shirley B90 2AX <https://www.shirleyparishb90.co.uk>

SHIRLEY PARISH



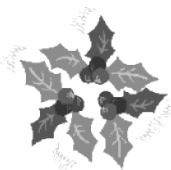
KNOWING CHRIST  
MAKING HIM KNOWN

# CHARITY CHRISTMAS TREE FESTIVAL



Thursday 8<sup>th</sup> December: 12pm - 6pm  
Friday 9<sup>th</sup> December: 10am - 8pm  
Saturday 10<sup>th</sup> December: 10am - 5pm  
including entertainment and children's activities  
and in Church House - refreshments, cake sale,  
hamper raffle and Father Christmas  
Sunday 11<sup>th</sup> December: 12pm - 4pm

*Everyone will  
be welcome*



Donations will support the work of

<https://practicalaction.org>



and

**BUILDING  
4HOPE**

<http://www.building4hope.org.uk>



## ADVENT & CHRISTMAS SERVICES

| Date                                    | Time                             | Service   | Venue  |
|---|----------------------------------|---|--|
| Thursday 1st                            | 10.30am                          | Holy Communion  | Church House   |
| Sunday 4th                              | 10.30am<br>3.30pm                | Parish Communion<br>Reflective Worship                                | St James Church<br>St John's Church  |
| Wednesday 7th                           | 2pm                              | MU Advent Service   | St James Church  |
| Thursday 8th                            | 10.30am<br>7pm                   | Holy Communion<br>Memorial Service                                    | St James Church<br>St James Church   |
| Sunday 11th                             | 8am<br>9am<br>10.30am<br>10.30am | Holy Communion<br>Holy Communion<br>Morning Worship<br>Holy Communion | St James Church<br>St John's Church<br>St James Church<br>Christ the King Church |
| Thursday 15th                           | 10.30am                          | Holy Communion  | St James Church  |
| Saturday 17th                           | 10am<br>4pm                      | Messy Church<br>Carol Service   | St James Church<br>St James Church   |
| Sunday 18th                             | 9am<br>10.30am<br>10.30am        | Morning Worship<br>Holy Communion<br>Morning Worship                  | St John's Church<br>St James Church<br>Christ the King Church                    |
| Thursday 22nd                           | 10.30am                          | Holy Communion  | St James Church  |
| Saturday 24th                           | 4pm<br>11pm                      | Angels at the Crib *<br>Holy Communion                                | St James Church<br>St James Church   |
| Sunday 25th<br><b>CHRISTMAS<br/>DAY</b> | 8am<br>9am<br>10.30am            | Holy Communion<br>Holy Communion<br>Holy Communion                    | St James Church<br>St John's Church<br>St James Church                           |
| Thursday 29th                           | 10.30am                          | Patronal Service  | St John's Church   |
| Sunday 1st<br>January                   | 10.30am<br>3.30pm                | Parish Communion<br>Reflective Worship                                | St James Church<br>St John's Church  |

\* Bring an angel, dress as an angel or come as you are to a retelling of the Christmas story \*

Recordings/live streams -

<https://www.youtube.com/ShirleyParishB90>

**PLEASE CHECK FOR ANY CHANGES ON THE WEEKLY PEW SLIP, SOCIAL MEDIA  
OR OUR WEBSITE <https://www.shirleyparishb90.co.uk>**

## GREEN FAIR - USES FOR PLASTIC BOTTLES



In spite of its usefulness, plastic waste is a big issue. Of the 300 million tonnes of plastic we produce every year, about **8 million tonnes of that ends up in our oceans**. Additionally, producing plastic creates CO<sub>2</sub>, so the larger our plastic footprint, the bigger our carbon footprint is as well. Many plastics produced are non-recyclable, which means that they will end up in landfill, as litter, or as ocean-bound plastic if they are not disposed of properly (which much of it is not). The more plastic we produce, the more plastic waste becomes litter.

At the Green Fair I showcased a number of ways plastic bottles can be reused: from bird feeders to self-watering plant pots, from bug houses to Christmas decorations, from string caddies to plant clothes, from Easter baskets to mobiles, from money boxes to printing sets.

Of course, all of these require time, patience and effort, but there are easier ways to cut down on plastic bottle waste. The simplest is just to cut down on the number of bottles you use.

### **A Challenge**

Start small. Look round your house and identify one plastic bottle in everyday use. Work out how to replace it with a non-plastic alternative, e.g. swap your shampoo bottle for a shampoo bar that comes in a recyclable cardboard box. Once you have successfully achieved that, pat yourself on the back and move onto another one, and then another ...

### **What attitude best describes you?**

Ready to Reduce, Making an effort, or Changemaker?

## REFLECTING FAITH - TO THE GLORY OF GOD

Everything about the church building is intended to tell us something about God.

But it doesn't end there. We put into the building things that are important to us and again reflect not just our specific denomination but our ways of worship.

Imagine visiting someone in their home whom you are just getting to know and have a look around at the decorations, photos, wall hangings, books, music etc. What are their hobbies? How do they enjoy spending their time? Who is important to them? Well our church interiors are like that.

In most church buildings each week there will be a display of flowers. Venues vary from being large and elaborate to simple and homely and so do such arrangements. Of course, much depends upon finance and the availability of flowers as well as the interest and skills of the arranger.

Flower arrangements 'should' be in keeping with the church season or the occasion that is being celebrated. During Advent (Latin meaning 'coming') while we anticipate the birth of Christ at the Feast of Christmas most places of worship show restraint in their arrangements and often decline to use any coloured flowers using only evergreen leaves.

Then nearer to Christmas itself everything changes and either flowers are added to the original evergreens or they start completely new. Colours change to red for love and Christ's death and passion, white and gold for importance, royalty and celebration: with green alongside for the hope of new birth and spring.



### **Decorating Plus ... (Odd Jobs)**

B90 and nearby

Call **Stewart** on **07802 566 441** or **0121 744 2804**

**Email - [DecoratingPlus@hotmail.co.uk](mailto:DecoratingPlus@hotmail.co.uk)**

## EVERYMAN

*“Everyman,  
I will go with thee,  
And be thy guide,  
In thy most need  
To go by thy side.”*

The medieval mystery play ‘Everyman’ sought to challenge the human tendency to love worldly riches and engage in unrighteous behaviour. Everyman is called to think about the pilgrimage of this life and where it is likely to lead. He looks for help on his journey and finds some in Good Deeds and Knowledge who are willing to accompany him and in the end the angels joyfully summon his soul to heaven.

In this New Year that lies ahead of us it would be a comfort to think that we have a guide. What a difference it makes on a tour if we are fortunate enough to have a good guide. In the nurture and teaching of children how crucial it is to guide them carefully through their formative years.

Psalm 48 speaking of God says:

*“This God is our God for ever and ever  
He shall be our guide for evermore”.*

The books of Psalms and Proverbs are full of allusions to God’s guiding of his people. Psalm 32 reads:

*“I will instruct you and teach you  
in the way that you should go  
I will guide you with my eye”.*

As the Hebrew people journeyed to the Promised Land God led them by day with a pillar of cloud and by night with a pillar of fire. At this Epiphanytide also we remember how the Wise Men and the Shepherds were guided by a star and found the Christ child. I’m sure if we, in sincerity, seek God’s guidance it will not be refused.

In the gospel of St. John Jesus teaches that the Holy Spirit, when he comes, will guide us into all truth. Sometimes truth is hard to bear as Everyman discovered but guided to the place of contrition, he confesses his sins and seeks God’s free flowing mercy, and receiving forgiveness rejoices in his salvation.

In 2023 may you find a guide in Jesus Christ and his teachings, may you benefit from the guidance offered by the church and may you, and those whom you love and pray for, be blessed with a peaceful, healthy and spirit filled year.

*Happy New Year!  
Rev’d Dr. Theresa Jones*



# C Bastock Ltd

## FUNERAL DIRECTORS

Independent Family Owned Funeral Directors since 1856

### Shirley Funeral Home

100, Stratford Road  
Shirley. B90 3BH  
0121 726 2626

### Solihull Funeral Home

67-71 Warwick Road,  
Solihull. B92 7HP  
0121 706 4040

### Yardley Funeral Home

112 Church Road,  
Yardley. B26 8UX  
0121 784 3230



Whether you have a traditional, contemporary or eco funeral in mind our family are here to help you. Our dedicated team will guide you through the choices and decisions to ensure a unique and befitting funeral.

Specialist provider of Pre-Paid Funeral Plans  
Peace of mind with secure affordable options

Free, no obligation help and advice.

[www.cbastock.co.uk](http://www.cbastock.co.uk)



## Bastock & Bruce Ltd

### FUNERAL DIRECTORS

*If Knowle is difficult to get to,  
we will happily visit you at  
home or you can meet Bruce  
at any of the Bastock family  
funeral homes.*

A partnership between C. Bastock Ltd and Bruce Bragg

Bruce is now the only remaining member of the Bragg family still in the industry following the sale of the Bragg family business in Shirley. This partnership brings a family business to Knowle with generations of experience ensuring the truly personal service you would expect from an independent business.

### Knowle Funeral Home

Brisker Court, 1685, High Street, Knowle. B93 0LN

**01564 33 5577 (24 hour)**

Serving all surrounding areas



[www.bastockandbruce.co.uk](http://www.bastockandbruce.co.uk)

## THIS MONTH'S CROSSWORD

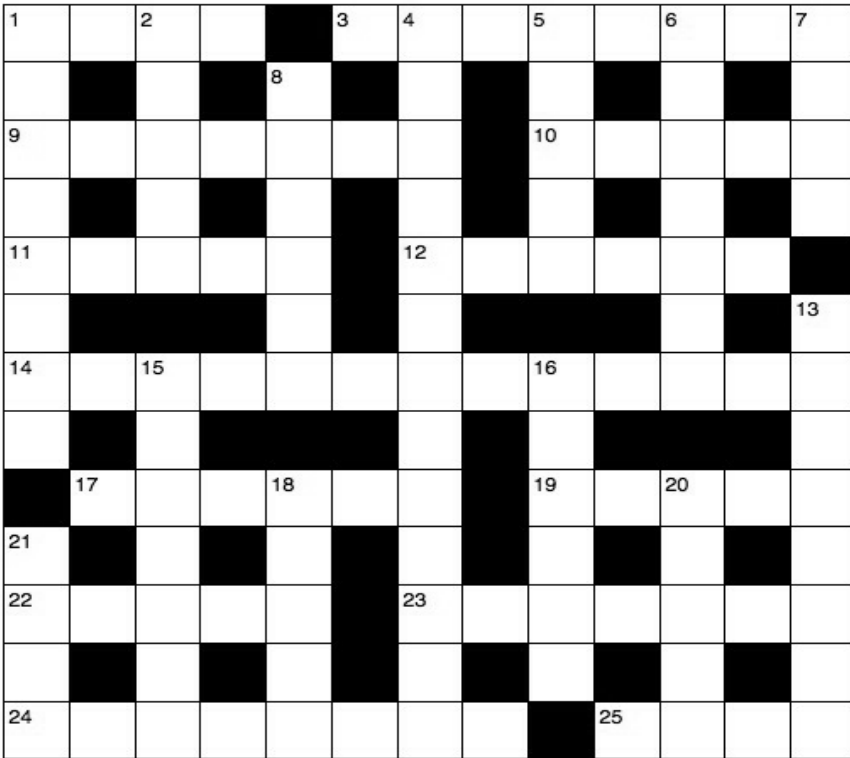
### Across

- 1** 'How long will you — your face from me?' (Psalm 13:1) (4)
- 3** 'Let us, then, go to him outside the camp, bearing the — he bore'  
(Hebrews 13:13) (8)
- 9** Posh sin (anag.) (Romans 8:15) (7)
- 10** Solemn pledges (Matthew 5:33) (5)
- 11** Italian term for full orchestra (5)
- 12** 'For he who avenges blood remembers; he does not — the cry of the afflicted'  
(Psalm 9:12) (6)
- 14** Prescience (1 Peter 1:2) (13)
- 17** Where a Hindu holy man lives (6)
- 19** 'If he found any... who belonged to the Way, whether — — women, he might  
take them as prisoners' (Acts 9:3) (3,2)
- 22** Fragrance (2 Corinthians 2:15) (5)
- 23** Vine hen (anag.) (Jonah 1:2) (7)
- 24** Precious stone decorating the twelfth foundation of the New Jerusalem  
(Revelation 21:20) (8)
- 25** 'Will you keep to the old path that evil men have — ?' (Job 22:15) (4)

### Down

- 1** 'Then Moses raised his arm and struck the rock twice with — — '  
(Numbers 20:11) (3,5)
- 2** 'You have heard that it was said to the people long ago, " — — murder"'  
(Matthew 5:21) (2,3)
- 4** One of Paul's many hardships endured as a servant of God (2 Corinthians 6:5) (13)
- 5** 'We ourselves, who have the first fruits of the Spirit, — inwardly' (Romans 8:23)(5)
- 6** Changed (Daniel 6:8) (7)
- 7** 'My yoke is — and my burden is light' (Matthew 11:30) (4)
- 8** Recoil (Revelation 12:11) (6)
- 13** 'O Lord, you have — me and you know me' (Psalm 139:1) (8)
- 15** ' — to me the joy of your salvation' (Psalm 51:12) (7)
- 16** Express sorrow (Isaiah 16:7) (6)
- 18** 'Then he said to Thomas, " — out your hand and put it into my side"'  
(John 20:27) (5)
- 20** 'God has said, " — will I leave you; — will I forsake you"' (Hebrews 13:5) (5)
- 21** Son of Onam and brother of Shammai (1 Chronicles 2:28) (4)

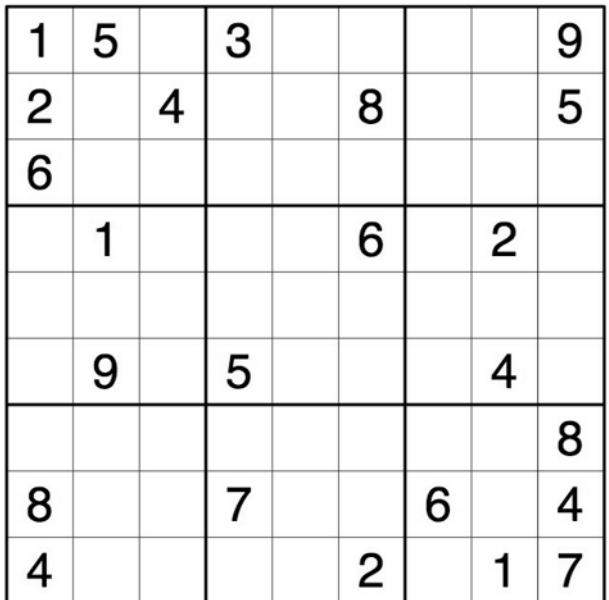
# THIS MONTH'S CROSSWORD & SUDOKU



Answers are on page 27



Luke 2:14





# The Roof Repair Co.

<https://www.roofingandgutteringservices.co.uk>

24 hour  
service

## From A Minor Repair To A New Roof

- ✓ NEW ROOFS
- ✓ NEW FLAT ROOF SYSTEMS
- ✓ RIDGE TILES REPOINTED & REBEDDED
- ✓ GUTTERING - UPVC CLADDING
- ✓ NO MONEY UP FRONT
- ✓ TOP QUALITY MATERIALS
- ✓ SENIOR CITIZENS DISCOUNTS

Guttering  
Repaired &  
Cleaned Out  
from £25

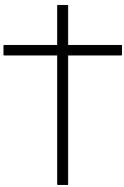


Repairs  
from as  
little as  
£35

FREE QUOTATION Without Obligation

FOR IMMEDIATE EMERGENCY RESPONSE

**0121 604 2104 / 07956 228 842**



## Monumental Masons

### BANNOCKS OF SOLIHULL

Five generations of quality manufacturing  
and service from a family business.

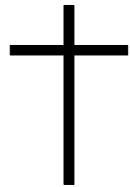
All aspects of Monumental Masonry

PERSONAL ATTENTION ~ ADVISORY SERVICE  
LARGE DISPLAY

117 Streetsbrook Road, Solihull B90 3PF  
(Opposite Robin Hood Cemetery)

**Tel: 0121 744 1727**

[www.bannocksmemorials.co.uk](http://www.bannocksmemorials.co.uk)





## DECEMBER WORD SEARCH

Christmas is nearly here!

Two thousand years ago the Jews were longing for the coming of their Messiah. The Old Testament had promised that when He came, He would preach good news to the poor, bind up the broken hearted, proclaim freedom for the captives and release from darkness for the prisoners, proclaim the year of the Lord's favour, comfort all who mourn and to bestow on his people a crown of beauty instead of ashes. Jesus did all those things. He was and is the Son of God, and whoever has seen Him has seen the Father. Whoever believes in Him will have the best gift of all – His Spirit within them, which gives them eternal life.



*Answers are on page 27*

ASHES  
 BEAUTY  
 BESTOW  
 BROKEN  
 COMFORT  
 CROWN  
 DARKNESS  
 FATHER  
 FAVOUR  
 FREEDOM  
 GOD  
 HEART  
 JESUS  
 LONGING  
 MESSIAH  
 MOURN  
 PRISONERS  
 SEEN  
 SON  
 THOUSAND  
 WHOEVER

|   |   |   |   |   |   |   |   |   |   |   |   |
|---|---|---|---|---|---|---|---|---|---|---|---|
| O | R | S | H | O | U | U | G | U | I | S | T |
| U | E | T | R | O | G | N | N | W | O | R | C |
| J | I | H | J | T | N | S | E | N | A | B | N |
| O | E | N | G | H | I | S | W | E | M | E | A |
| D | K | S | R | O | G | L | H | K | E | A | I |
| O | A | T | U | U | N | E | O | O | S | U | R |
| C | P | R | I | S | O | N | E | R | S | T | E |
| E | R | O | K | A | L | M | V | B | I | Y | H |
| H | N | F | E | N | S | E | E | N | A | R | T |
| S | G | M | O | D | E | E | R | F | H | A | A |
| R | U | O | V | A | F | S | E | H | S | A | F |
| E | R | C | D | S | B | E | S | T | O | W | M |

# Shirley Heath Trees

Gardens & Grounds Maintained, Specialists in Tree  
& Hedge work, Paving & Fencing

Contractors for Schools, Factories etc

**FREE ESTIMATES, FULLY INSURED. LOCAL & RELIABLE**

**Office: 01564 700143**

**Mob: 07836 647745**

E: [sales@shirleyheathtrees.co.uk](mailto:sales@shirleyheathtrees.co.uk)

**[www.shirleyheathtrees.co.uk](http://www.shirleyheathtrees.co.uk)**

## BILL BOYCE DECORATORS

We have been a family run business since 1982 and we pride ourselves on the quality of our work.

We carry out private work but also carry out work in offices, schools, restaurants and shop premises.

Visit <https://billboycedecorators.co.uk> to find out more

**Telephone ~ 0121 744 0040**

**or 07976 810680 (Bill)**

**or 07966 275134 (Dan)**

89 Union Road  
Shirley, Solihull  
B90 3BY



**Email ~ [sandraboynce61@hotmail.com](mailto:sandraboynce61@hotmail.com)**

## PUZZLE ANSWERS

|   |   |   |   |   |   |   |   |   |
|---|---|---|---|---|---|---|---|---|
| 1 | 5 | 7 | 3 | 2 | 4 | 8 | 6 | 9 |
| 2 | 3 | 4 | 9 | 6 | 8 | 1 | 7 | 5 |
| 6 | 8 | 9 | 1 | 5 | 7 | 4 | 3 | 2 |
| 5 | 1 | 8 | 4 | 7 | 6 | 9 | 2 | 3 |
| 7 | 4 | 6 | 2 | 3 | 9 | 5 | 8 | 1 |
| 3 | 9 | 2 | 5 | 8 | 1 | 7 | 4 | 6 |
| 9 | 7 | 1 | 6 | 4 | 3 | 2 | 5 | 8 |
| 8 | 2 | 3 | 7 | 1 | 5 | 6 | 9 | 4 |
| 4 | 6 | 5 | 8 | 9 | 2 | 3 | 1 | 7 |

|   |   |   |   |   |   |   |   |   |   |   |   |
|---|---|---|---|---|---|---|---|---|---|---|---|
| H | I | D | E | D | I | S | G | R | A | C | E |
| I | O | S | M | R | L | A |   |   |   |   |   |
| S | O | N | S | H | I | P | O | A | T | H | S |
| S | O | R | R | A | E | Y |   |   |   |   |   |
| T | U | T | T | I | I | G | N | O | R | E |   |
| A | N | S | E | S |   |   |   |   |   |   |   |
| F | O | R | E | K | N | O | W | L | E | D | G |
| F | E | N | A | A |   |   |   |   |   |   |   |
| A | S | H | R | A | M | M | E | N | O | R |   |
| J | T | E | E | E | E | E | C |   |   |   |   |
| A | R | O | M | A | N | I | N | E | V | E | H |
| D | R | C | T | T | E | E |   |   |   |   |   |
| A | M | E | T | H | Y | S | T | T | R | O | D |

|   |   |   |   |   |   |   |   |   |   |   |   |
|---|---|---|---|---|---|---|---|---|---|---|---|
| O | R | S | H | O | U | U | G | U | I | S | T |
| U | E | T | R | O | G | N | N | W | O | R | C |
| J | I | H | J | T | N | S | E | N | A | B | N |
| O | E | N | G | H | I | S | W | E | M | E | A |
| D | K | S | R | O | G | L | H | K | E | A | I |
| O | A | T | U | N | E | O | O | S | U | R |   |
| C | P | R | I | S | O | N | E | R | S | T | E |
| E | R | O | K | A | L | M | V | B | I | Y | H |
| H | N | F | E | N | S | E | E | N | A | R | T |
| S | G | M | O | D | E | E | R | F | H | A | A |
| R | U | O | V | A | F | S | E | H | S | A | F |
| E | R | C | D | S | B | E | S | T | O | W | M |



## MOBILE HAIRDRESSER

Fully qualified **LADIES AND GENTLEMENS** Hairdresser

Available for appointments in the comfort  
of your own home

Please Telephone **CLAIRE** on

**01564 794684** or **07931 751 451**

## FROM THE PARISH REGISTERS - OCTOBER

### Baptisms

|      |  |
|------|--|
| 2nd  | Imogen Edna Hackett                          |
| 9th  | Chloe Myrtle Coniff<br>Isabel Matilda Coniff |
| 15th | William Lewis                                |
| 16th | Annabelle Wren Fox                           |
| 23rd | Nimah Lauren Thomas                          |

### Funerals

|      |                |    |
|------|----------------|----|
| 20th | Brian Yates    | 83 |
| 25th | Gillian Morris | 76 |

## COZY TOES

**Bev Hughes DipCFhp**

**Mobile Foot Health Practitioner**

**07764 636468 or  
0121 451 3586**



**OFFERING A FRIENDLY,  
RELIABLE, PROFESSIONAL  
SERVICE AT AFFORDABLE PRICE**

**Over 65 £20.00 per session**

**Under 65 £25.00 per session**

#### **TREATMENT INCLUDES:-**

- ✓ FREE CONSULTATION
- ✓ TOENAILS CUT &
- ✓ THICKNESS REDUCED  
CALLOUSES REMOVED
- ✓ CORNS & VERRUCAS  
TREATED
- ✓ DIABETIC FOOTCARE



**Be who you've always been... a keen gardener**

At Blossomfield Grange care home being a keen gardener doesn't stop when you make the journey into care. Bring your life with you to a place you can call home.

If you're considering care call **0121 756 4751**.

 **Trusted to care.**

Blossomfield Grange care home  
Solihull  
[careuk.com/blossomfield-grange](http://careuk.com/blossomfield-grange)

**care UK** 

## Thomas Bragg & Sons Funeral Directors

**We create every  
funeral individually,  
just for you.**

- 24-hour service
- Bereavement advice
- Transparent pricing
- Home visits
- Private chapels of rest
- Floral tributes
- Memorial masonry
- Prepaid funeral plans

Thomas Bragg & Sons Funeral Directors are here to support and guide you. We offer a friendly, professional service to families.

**Call us for immediate support, advice or a home visit. We are here to help 24 hours a day.**

[www.thomasbragg.co.uk](http://www.thomasbragg.co.uk)

**Shirley**

**0121 744 1428**

562 Stratford Road, B90 4AY

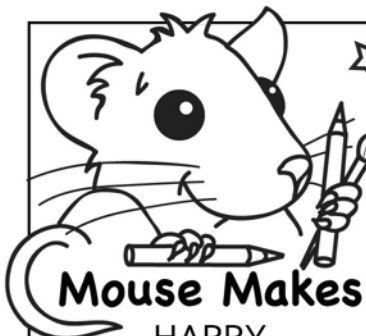
**Knowle**

**01564 773 610**

1682 High Street, B93 0LY

 **Funeral Partners**





**Mouse Makes**

**HAPPY CHRISTMAS!**

Read the Christmas story in **Luke 2:1-21**.

Answer the questions, colour the picture and colour one star each day until Christmas.

Where was Mary's baby born?  
Why were Joseph and Mary there?

What did Mary dress her baby in?

Where did Mary lay her baby and why?

Why were the shepherds afraid?

What good news did the angel tell?

What did the shepherds do after they had seen the baby?

Who appeared praising God, what did they say?

G  
L  
O  
R  
Y  
M  
R  
C  
S  
A  
Y  
G  
P  
O  
N  
V  
O  
J  
G  
B  
A  
B  
Y  
N  
G  
O  
O  
D  
A  
B  
L  
E  
F  
V  
O  
S  
H  
E  
P  
H  
E  
R  
D  
S  
A  
V  
I  
O  
U  
R  
D  
A  
Y  
T  
M  
A  
R  
Y  
N  
E  
N  
F  
R  
R  
O  
S  
C  
H  
R  
I  
S  
T  
E  
P  
G  
L  
T  
D  
A  
L  
A  
I  
D  
R  
W  
H  
E  
O  
H  
E  
P  
R  
A  
I  
S  
E  
L  
C  
H  
E  
I  
V  
A  
L  
L  
S  
K  
E  
E  
A  
N  
I  
G  
H  
T  
O  
L  
D  
S  
M  
C  
N  
D  
E  
C  
R  
E  
E  
B  
E  
A  
E  
I  
S  
I  
G  
N  
E  
T  
D  
E



ALL • DECREE • JOSEPH • DAVID • BETHLEHEM • MARY • BIRTH • SON • LAID • MANGER  
INN • SHEPHERDS • FLOCK • NIGHT • LORD • GLORY • GOOD NEWS • JOY • DAY  
SAVIOUR • CHRIST • SIGN • BABY • GOD • PEACE • ANGELS • GO • SEE • TOLD • PRAISE

# SHIRLEY PARISH GUIDE *continued*

## READERS

**Kate Day**

email: kate\_day@me.com

Tel: 0121 537 9672

**Gill Gough**

email: g.gough@hotmail.co.uk

Tel: 0121 603 2636

**Sarah Penfold**

email: sarahpenfold@blueyonder.co.uk

Tel: 0121 681 1525

**Denise Smith**

email: deesmith1181@hotmail.com

Tel: 01564 822606

## CHURCH WARDENS

**Parish Wardens**

Margaret Foreshew Tel: 0121 603 9833

email: mhforeshew@gmail.com

Gill Hanton Tel: 0121 733 2347

email: gill.hanton@btinternet.com

**Deputy Wardens - St James the Great Church**

Kate Crocker

Linda Pitt

Tel: 07562 664163

Tel: 0121 744 6777

**Deputy Warden - Christ the King Church**

Denise Smith

Tel: 01564 822606

**Deputy Warden - St John the Divine Church**

Linda Alford

Tel: 0121 430 4785

**SAFEGUARDING**

Sue Harries

Tel: 07977 012753 or 0121 745 8896 (c/o Parish Office)

## SAFEGUARDING

***As you all know we are a parish that takes safeguarding very seriously.  
Everyone who comes to our churches deserves to feel included and very  
importantly, safe.***

***We want you to know that if anything is concerning you, please talk to Sue  
Harries, Safeguarding Co-ordinator, or Paul Day, Vicar.***

***We must all look after one another.***

## FOR ANY ENQUIRIES ABOUT THIS MAGAZINE PLEASE CONTACT THE PARISH OFFICE OR THE EDITOR -

**Gill Hanton, 200 Tythe Barn Lane, Dickens Heath B90 1PF**

**Telephone : 0121 733 2347 or 07973 942145**

**Email : shirleyparishmagazine@gmail.com**

*Whilst every care is taken to ensure that the contents of the magazine are correct,  
the Parish cannot be responsible for any errors that may occur in the editorial or  
advertisements, nor for the actions of the advertisers.*

**Registered Charity number 1131912**

# *P* STEPHEN & PHILIP PAINTER

FUNERAL DIRECTORS  
INDEPENDENT & FAMILY-OWNED



The only funeral homes still owned by  
The Painter Family. Providing a dignified & personal  
service across Birmingham & Solihull

## **HALL GREEN OFFICE**

192 ROBIN HOOD LANE  
HALL GREEN  
BIRMINGHAM B28 0LG

**TEL: 0121 777 4300**

## **ACOCKS GREEN OFFICE**

213 YARDLEY ROAD  
ACOCKS GREEN  
BIRMINGHAM B27 6LZ

**TEL: 0121 707 1172**

[WWW.STEPHENANDPHILIPPAINTER.COM](http://WWW.STEPHENANDPHILIPPAINTER.COM)

## **MOBILE HAIRDRESSER - DAWN**



Ladies & mens, fully qualified & insured  
Covid Safe, over 30 years experience  
Reduced prices for OAPs

**Telephone: 0121 744 0421 or 07761 473524**