

# Shirley Parish Magazine



December 2023

SHIRLEY PARISH



KNOWING CHRIST  
MAKING HIM KNOWN

# SHIRLEY PARISH GUIDE (see also inside the back cover)

CLERGY

## Reverend Paul Day

email: vicar@shirleyparishb90.co.uk

Tel: 0121 537 9672

## Reverend Richard Haynes

email: curate@shirleyparishb90.co.uk

Tel: 07972 530161

## Reverend Wendy Martin

email: associatepriest@shirleyparishb90.co.uk

Tel: 07543 829571

## Reverend Wendy Carter

email: revwendy@sky.com

Tel: 0121 744 6315

## Reverend Dr. Theresa Jones

email: theresaj1@btinternet.com

Tel: 01564 822687

## Parish Office, Church House, Church Road, Shirley, B90 2AX

Opening hours: Monday to Friday, 9.30am to 12.30pm

Telephone: 0121 745 8896

Email: office@shirleyparishb90.co.uk

Parish Website: <https://www.shirleyparishb90.co.uk>

Social Media: [twitter.com/@ParishB90](https://twitter.com/ParishB90)

[facebook.com/@AdventureinFaithB90](https://facebook.com/@AdventureinFaithB90)

YouTube: <https://www.youtube.com/@shirleyparish5736>

Zoom: <https://us02web.zoom.us/j/4904334906>



**CHURCH HOUSE (opposite St James Church), Church Road, Shirley B90 2AX**

**ST JAMES THE GREAT CHURCH, Church Road, Shirley B90 2AX**

**CHRIST THE KING CHURCH, Widney Junior School, Clifton Crescent, Solihull B91 3LQ**

**ST JOHN THE DIVINE CHURCH, Tilehouse Lane, Tidbury Green, Shirley B90 1PW**

**FOR ANY ENQUIRIES ABOUT THIS MAGAZINE PLEASE CONTACT  
THE PARISH OFFICE OR THE EDITOR -**

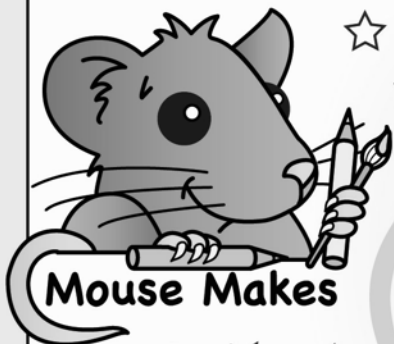
**Gill Hanton - Telephone : 0121 733 2347 or 07973 942145**

**Email : shirleyparishmagazine@gmail.com**

***Deadline for information and articles for next month's magazine: 12th of the month***

*Whilst every care is taken to ensure that the contents of the magazine are correct, the Parish cannot be responsible for any errors that may occur in the editorial or advertisements, nor for the actions of the advertisers.*

**Registered Charity number 1131912**



# Mouse Makes



## GOD'S PROMISE

Isaiah 9:6-7

CHILD • BORN • SON  
GIVEN • WONDERFUL  
COUNCELLOR  
MIGHTY • GOD  
EVERLASTING  
FATHER • PRINCE  
PEACE • LORD



## AN ANGEL MESSENGER

Luke 1:26-38

ANGEL • GABRIEL  
JOSEPH • MARY  
FAVOUR • SON  
JESUS • GREAT  
THRONE • REIGN  
FOREVER • HOLY  
SERVANT • WORD

V	R	P	R	I	N	C	E	L	R	O	D
W	O	R	D	C	F	A	T	H	E	R	E
J	A	G	M	A	N	G	E	R	G	E	B
O	W	H	O	E	V	E	R	W	I	I	J
S	J	O	J	O	B	O	R	N	O	S	G
E	S	L	S	E	R	V	A	N	T	N	S
P	P	Y	J	C	H	I	L	D	E	P	U
H	R	O	S	H	E	P	H	E	R	D	S
F	A	V	O	U	R	E	F	R	W	S	O
B	I	R	T	H	S	W	O	F	O	D	L
I	S	A	V	I	O	U	R	U	R	L	O
F	E	C	O	U	N	C	E	L	L	O	R
A	N	G	E	L	B	J	V	K	D	V	D
B	E	T	H	L	E	H	E	M	G	E	S
L	A	N	G	E	L	S	R	G	O	D	V
I	G	A	B	R	I	E	L	T	D	S	M
F	P	G	I	V	E	N	A	H	U	O	A
E	E	H	G	A	V	E	S	R	W	N	R
S	A	E	G	R	E	A	T	O	N	L	Y
O	C	H	R	I	S	T	I	N	N	J	O
N	E	O	G	O	O	D	N	E	W	S	N
F	L	O	C	K	M	I	G	H	T	Y	B

**ADVENT**  
comes from  
the Latin  
'AD VENTO'  
which means  
**ARRIVAL**

In Advent we  
celebrate Jesus' birth  
and look forward to  
the time when Jesus  
will come again.



## A LONG JOURNEY

Luke 2:1-20

BETHLEHEM  
REGISTER • BIRTH  
MANGER • INN  
SHEPHERDS • FLOCK  
ANGELS • JOY  
GOOD NEWS • PRAISE  
SAVIOUR • CHRIST



## THE BEST GIFT OF ALL

John 3:16

GOD • SO • LOVED  
WORLD • HE • GAVE  
ONLY • SON  
WHOEVER • BELIEVES  
ETERNAL • LIFE



[www.mgphysioandpilates.com](http://www.mgphysioandpilates.com)

Bei Capelli, Parkgate Shopping Centre, B90 3GG

# Miriam Green Physiotherapy and Pilates

I am an experienced Pelvic Health Physiotherapist with expertise in treating the following:

- ✓ Bladder and bowel incontinence
- ✓ Back or pelvic pain in pregnancy
- ✓ Pelvic organ prolapse
- ✓ Chronic pelvic pain

I am also a fully certified matwork Pilates instructor and teach classes at The Shirley Institute. For more details or any questions please do get in touch by email: [mgphysioandpilates@gmail.com](mailto:mgphysioandpilates@gmail.com)

Or phone: 07753885320



## HARWOOD & ENGLISH DECORATORS



\* 25 years experience \*

\* Interior & Exterior \*



\* Fully Insured \* Free quotes \* Insurance work \*

Telephone:

07976 952435

0121 744 6628



07801 631822

0121 744 0421



Email: [steven\\_harwood@icloud.com](mailto:steven_harwood@icloud.com)



## REMEMBRANCE SUNDAY

What an astounding attendance there was at the Cenotaph at St James Church on Sunday 12th November, in spite of it being a miserable weather day.

I was emotionally affected by this, it proved irrelevant. They were there and showed we still have a caring community. I take my hat off to the people who give up their time to be leaders of associations such as scouts, guides, sea cadets etc. How smart they were and apparently proud to wear their uniforms. All this gladdened my heart after travelling home the previous day by train from Birmingham with a group of 'yobbos'.

So take heart everyone all is not lost after what I witnessed on that day.

In conclusion a very big 'well done' to all concerned and 'thank you' to all the kitchen staff in Church House providing delicious coffee and biscuits. What a joy to wrap freezing fingers round a hot cup!

*Liz Blakey*

## OUR ANNUAL MEMORIAL SERVICE

We have a large family and the weeks building up to Christmas are always a time of making arrangements. Who is going to see who and when over the Christmas period? Will we have a house full of grandchildren or will it be us just the two of us? Will one of our children invite us for Christmas lunch, or will they invite themselves to ours?

But I also recognise that it is not like that for everyone – particularly if someone dear to you is no longer with us. Christmas can be a time when the absence of loved ones is noticed far more than at other times of the year. This is why we hold our annual memorial service in the weeks leading up to Christmas – this year it will be on **Thursday 7th December at 7pm in St James Church.**

During the service we will sing some familiar Christmas carols, hear some words of hope and each have the chance to take part in an act to remember our loved ones. We will also read out the names of those who have died. The atmosphere of the service will be one of hope and encouragement as we continue our life journey together. Our Christmas Tree Festival will be happening at the time so the church will be full of Christmas trees, including a memory tree on which you can place your loved ones' names.



Everyone is welcome to join us – no matter how long ago your loved ones died. If you would like a name read out please contact the Parish Office in advance, or simply write the name on the list at the back of church as you arrive.

We look forward to seeing you.

*Reverend Paul Day*

## SOME THOUGHTS ON CELEBRATING CHRISTMAS

I was at a gathering the other day and someone asked the question “when do people put up their Christmas trees?”. As you can imagine, there were many and varied answers ranging from the end of November right through to Christmas Eve. But it got me thinking about when we should start celebrating Christmas.

The Christian calendar is quite clear. The Christmas season begins on Christmas Day – effectively with the Eucharist of Christmas at midnight on Christmas Eve. Before that is a period of preparation – Advent. After that the Christmas season goes through Epiphany and on to Candlemas – The Presentation of Christ in the Temple - on February 2nd. Strictly speaking then carols should not be sung and the tree and decorations shouldn't go up till late on Christmas Eve and we should continue singing the carols, and the decorations should stay up, until Candlemas.

But that's not how it is (at least for most of us).

This year we will be inviting children into church for the Journey to the Stable from Monday 27th November – even before Advent begins! Our Christmas Tree Festival will run from Thursday 7th December. We will be singing carols with other churches in Shirley outside ASDA on Sunday 10th; our own carol service will be on Sunday 17th and there will be numerous school celebrations before the term ends. Have we just bowed to the pressures of the world around us? Ought we to go back to how it “should” be?

It's a hard one to answer. I am sad that in public perception Christmas effectively ends on Christmas Day – which makes the Christmas story finish with the baby in the manger whereas we know that is just the beginning! And yet it would be another sign that the church is out of touch with the public mood if we didn't even sing a carol until the 25th. My own view is that we need to embrace where people are but also stress that Christmas does not finish with the manger. How we do that is always open to debate.

I'd be interested to know your views.

*Reverend Paul Day*

### **PODIATRIST / CHIROPODIST**

Surgery and Home Visits

**JONATHAN LEESE** D.Pod.M., M.Ch.S

**HCPC REGISTERED**

**Tel: 0121 733 1292**

193 Creynolds Lane, Shirley B90 4ES



This year's Church of England Christmas theme is – 'Follow the Star: Join the Song'.

It highlights how singing can help draw us closer to God and each other through the journey from Advent to Epiphany.

*"The shepherds were astonished to find the night sky filled with angels singing God's praise. And before long they were singing, too ... Centuries later, singing is still central to how many of us celebrate Christmas.*

*We invite you this Christmas to follow the star, journey to the manger, join the song and come into the presence of Jesus Christ."*

*Archbishops Justin Welby and Stephen Cottrell*

Copies of the booklet will be available in our churches.

## CHRISTMAS COFFEE MORNING

Monday 11th December at St John's Church



*All will be welcome - 10.30am until 12 noon*

### THE FRIENDS OF ST JAMES 100 CLUB

Members are reminded that subscriptions for the next six months (December to May) are now due - £13 for six months - £26 for twelve months.

Please make cheques payable to "Friends of St James 100 Club".

Subscriptions may be handed into the Parish Office or posted to Lynda McPherson, 90 Dickens Heath Road, Shirley, B90 1RL.

### Congratulations to the November winners

£50 ~ Lorna Bevins £25 ~ Barbara Neale

## FROM THE ECO-CHURCH SUBGROUP



Have yourself an eco-friendly Christmas  
 Tell your shopping self  
 'leave those might-need extras right there on the shelf'.

Have yourself an eco-friendly Christmas  
 lovely home-made treats  
 Tastier than the over-packaged, shop bought 'feasts'.

Less waste, as in olden days  
 Happy golden days of yore  
 Using all the left-overs,  
 Packing tight the freezer drawer.

Christmas Day we all can work together  
 Making more with less  
 Mindful of the planet, welcoming our guests.

So have yourself an eco-friendly Christmas now  
 Merry Christmas now

*Chris Speakman, Pam Owen, Chris Terry, Wendy Martin, Kate Crocker*



# CHRISTMAS TREE FESTIVAL



Thursday 7<sup>th</sup> December: 12pm - 6pm

Friday 8<sup>th</sup> December: 10am - 5pm

Saturday 9<sup>th</sup> December: 10am - 5pm

**PLUS** *in Church House in the morning - refreshments, cake sale, craft stalls and Father Christmas*

Sunday 10<sup>th</sup> December: 12pm - 3pm

**St James Church, Church Road  
Shirley B90 2AX**

Donations received will support the work of Mothers' Union charities and our Pod Project



<https://www.shirleyparishb90.co.uk>



## SHIRLEY PARISH BOOK CLUB

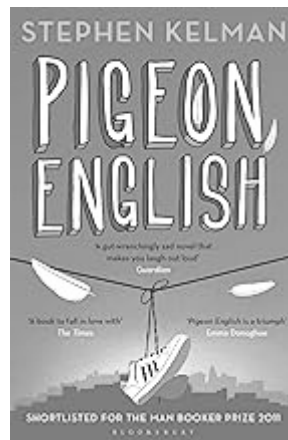
*I know what I have given you; I do not know what you have received.*

These words were written by the Argentinian poet, Antonio Porchia (1885 – 1968) and they seem particularly appropriate for the Shirley Parish Book Club, not just for our current novel *Pigeon English* by Stephen Kelman but for almost everything we read together. Each of us react in different ways to whatever we are reading. Each of us finds something in a novel which, possibly, the writer did not intend. This is the absolute joy of the Book Club and what makes all of our meetings totally unpredictable and completely satisfying. We talk and we are listened to.

Stephen Kelman wrote his novel as a reaction to the killing of 10 year old Nigerian schoolboy Damilola Taylor in 2000. Two brothers, aged 12 and 13 at the time, were convicted of his killing. The main character in the novel, Harri Opoku is slightly older than Damilola was and had come fairly recently from Ghana with his mother and sister. Despite the world into which he had come – aggressive, threatening and violent – Harri remains curious, patient, and positive, and with a view of the world that is steadfastly innocent. In particular he delights in the use of the new language that surrounds him and that he and the narrative of the novel revels in. The story is written with Harri’s voice, punctuated with his favourite expressions – “Asway” (I swear), “Advise yourself” and “Hutious” (amazing).

The novel begins with Harri’s (and his friend Dean’s) discovery of the body of a classmate, killed apparently for his packed lunch. Like the many TV films they have seen, the two friends set out to solve the murder. Two naïve boys playing detectives in a world of real violence and wasted lives.

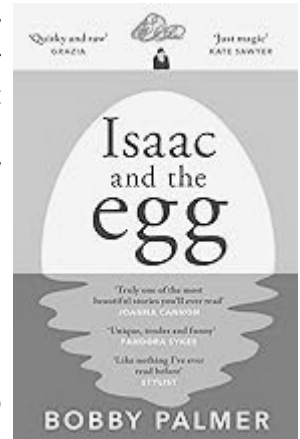
Book Club readers entered much of the novel with real trepidation, so much so that some found it hard to continue. Although they found the story, sometimes hidden by the humour and delight in the language, cruel and brutal, they were drawn in: “By the end of the book, I had the same feeling of bereavement that I get from a really good book – that I didn’t want it to end - I wanted to learn more about your Harri and his family and their lives”. Others in the Book Club felt it gave them important insights: “... powerful warnings of the dangers of peer pressure ... and very thankful that I have not had to keep my own children and grandchildren safe from the dangers of such brutal environments”. “My biggest takeaway from this novel was a feeling of gratitude for never having lived in a place where brutality and violence underpin everyday life.”



Stephen Kelman has said of his novel that in writing it he got to know himself more than he got to know Harri. He was changed by the experience. When we in the Book Club entered this novel we thought that maybe it would help us to understand – and maybe think of ways to change – knife crime in our society. Or perhaps, living alongside Harri and his newly arrived family on a city housing estate would help us understand better the experiences of recent migrants.

This takes us back to what our Book Club is about. It's partly about working out how the writer wanted to alter our perceptions, but it's also about how books change us. It's about how books can confront us in ways which we – and maybe even the writer of those books – never expected. Perhaps this is why *Pigeon English* is read so widely in schools: to confront the young about the ways they see the world around them. The novel certainly opened our eyes.

The next Book Club meeting will be at **2pm on Monday 18th December in Church House**. The book under discussion will be *Isaac and the Egg* by Bobby Palmer. Why don't you come – to listen, eat biscuits, drink tea and enjoy undemanding company?



*Ray Speakman*

## MOBILE HAIRDRESSER

Fully qualified **LADIES AND GENTLEMENS** Hairdresser  
Available for appointments in the comfort  
of your own home

Please Telephone **CLAIRE** on  
**01564 794684** or **07931 751 451**

## HOT DRINKS, HOME-MADE CAKE AND COMPANY



**Tuesday mornings -  
10am until 11.30am -  
at our WELCOME CAFE  
in Church House**



*(Please note that the cafe will NOT be open on Boxing Day - Tuesday 26th December)*

## HELPING PEOPLE IN NEED

Each month when I sit down to write this article, it's mainly a question of whether I say THANK YOU - or PLEASE MAY I HAVE? first!

But this month, both those will have to wait because I have decided to have a moan first. You may recall that many moons ago, David and I decided to retire from scrounging; and you may recall that somehow that resolve weakened and we still put out the word occasionally for urgently needed items, mainly for children's warm clothes and underwear. But a reminder that we are not a dumping ground or a charity shop – we can only deal with the items that we have requested.

Now onto the happy part. Thank you for the children's anoraks and coats - they were fantastic! The ones without hoods I teamed up with pompom hats and mittens knitted by two lovely ladies of this parish, so they will all be snug when they go out in the cold (or sleep in them if their rooms have no heating this winter). I was also given some books and small toys for toddlers and children which I shall offer at the Christmas gift table at St John's Food Bank and at the ADAVU party.

This year was the 20th anniversary of the Narthex – the charity set up at St John's Church in Sparkhill by the Reverend John Self and his wife Frances when they came back to England after a stint as missionaries in India. (They lived and slept in the cleaned out elephants' quarters - hence the wide and shallow steps at the entrance!) They were appalled at the poverty and need in their Parish and, initially informally, and then after a few years they set up the legal framework; at first it was holding youth clubs (separate for the girls of course), luncheon clubs for the elderly with a nurse partially funded by the Diocese to give some practical help with dressings and medications, language clubs for ladies who rarely left their houses, and then eventually the Trussell Trust Food Bank and its satellites. David and I started to support them eighteen years ago which makes us some of the longest serving volunteers. We were honoured to be invited to their 20th birthday celebration by the recently appointed CEO, Patricia Coleman-Taylor, who has vigorously supported the expansion of the financial and welfare advice services. But it's been the wonderful support of this Parish as you have responded to our appeals which has helped the work of the Narthex to flourish. Sadly, the need for its services is greater today than ever.

FOOD BANK: although currently the television is full of adverts showing exotic and exciting foods, at "our" Food Bank, the need is really for the basic items, particularly tinned fruit, rice pudding, long life fruit juice (not squash) and UHT milk (full fat for the children please).

David and I thank you for all you do and wish you a peaceful Christmas and a healthy 2024.

*Elizabeth Paice*



# The Roof Repair Co.

<https://www.roofingandgutteringservices.co.uk>

24 hour  
service

## From A Minor Repair To A New Roof

- ✓ NEW ROOFS
- ✓ NEW FLAT ROOF SYSTEMS
- ✓ RIDGE TILES REPOINTED & REBEDDED
- ✓ GUTTERING - UPVC CLADDING
- ✓ NO MONEY UP FRONT
- ✓ TOP QUALITY MATERIALS
- ✓ SENIOR CITIZENS DISCOUNTS



Guttering  
Repaired &  
Cleaned Out  
from £25

Repairs  
from as  
little as  
£35

FREE QUOTATION Without Obligation

FOR IMMEDIATE EMERGENCY RESPONSE

**0121 604 2104 / 07956 228 842**

## Thomas Bragg & Sons Funeral Directors

**We create every  
funeral individually,  
just for you.**

- 24-hour service
- Bereavement advice
- Transparent pricing
- Home visits
- Private chapels of rest
- Floral tributes
- Memorial masonry
- Prepaid funeral plans

Thomas Bragg & Sons Funeral Directors are here to support and guide you. We offer a friendly, professional service to families.

**Call us for immediate support, advice  
or a home visit. We are here to help 24  
hours a day.**

[www.thomasbragg.co.uk](http://www.thomasbragg.co.uk)

**Shirley**

**0121 744 1428**

562 Stratford Road, B90 4AY

**Knowle**

**01564 773 610**

1682 High Street, B93 0LY

 **Funeral Partners**



## ADVENT & CHRISTMAS SERVICES

<b>Date</b>	<b>Time</b>	<b>Service</b>	<b>Venue</b>
Sunday 3rd	10.30am	Parish Communion	St James Church
<b><i>Advent Sunday</i></b>	3.30pm	Reflective Worship	St James Church
Wednesday 6th	2pm	MU Advent Service	St James Church
Thursday 7th	10.30am	Holy Communion	St James Church
	7pm	Memorial Service	St James Church
Sunday 10th	8am	Holy Communion	St James Church
	9am	Holy Communion	St John's Church
	10.30am	Morning Worship	St James Church
	10.30am	Holy Communion	Christ the King Church
	3pm	Carol Singing	Outside ASDA
Thursday 14th	10.30am	Holy Communion	St James Church
Saturday 16th	10am	Messy Church	St James Church
Sunday 17th	9am	Morning Worship	St John's Church
	10.30am	Holy Communion	St James Church
	10.30am	Morning Worship	Christ the King Church
	6pm	Carol Service	St James Church
Thursday 21st	10.30am	Holy Communion	St James Church

**PLEASE CHECK FOR ANY CHANGES ON THE WEEKLY NOTICE SHEET, SOCIAL MEDIA  
OR ON OUR WEBSITE <https://www.shirleyparishb90.co.uk>**



# CHRISTMAS

Date	Time	Service	Venue
Sunday 24th	9am	Holy Communion	St John's Church
<b>Christmas Eve</b>	10.30am	Holy Communion	St James Church
	10.30am	Holy Communion	Christ the King Church
	4pm	Worship 4 Everyone – Shepherds at the Crib	St James Church
	11pm	Midnight Communion	St James Church
Monday 25th	8am	Holy Communion	St James Church
<b>Christmas Day</b>	10.30am	Parish Communion	St James Church
Thursday 28th	10.30am	Patronal Service	St John's Church
Sunday 31st	8am	Holy Communion	St James Church
	10.30am	Holy Communion	St James Church
	10.30am	Morning Worship	Christ the King Church
	3.30pm	Forest Church	St John's Garden



*Copies of the sermons can be found on our website -  
<https://www.shirleyparishb90.co.uk/download-a-sermon>*

## LINDA'S FLOWER QUIZ IN AID OF THE POD PROJECT - ANSWERS

CLUE	ANSWER
1. Always Sat Out (10)	Wallflower
2. Sad Ringer (8)	Bluebell
3. Go Fast Safely (9)	Speedwell
4. Bovine Mistake (7)	Cowslip
5. He Loved Himself (9)	Narcissus
6. Dame Edna's Favourite (8)	Gladioli
7. Vanilla Flower (6)	Orchid
8. Untidy Christopher (6,5)	Ragged Robin
9. Stupid Boy Pike (8)	Lavender
10. Mrs Buckets Sister (5)	Daisy
11. Beer Rag (anagram) (7)	Gerbera
12. Wise King Mark (8,4)	Solomon's Seal
13. Saffron Maker (6)	Crocus
14. Calendar Girls (5,6)	Naked Ladies
15. Proper English Beauty (8)	Primrose
16. Creation of Baroness Orezy (7,9)	Scarlet Pimpernel
17. Small Player (5)	Viola
18. Nazi in (anagram) (6)	Zinnia
19. By Any Other Name (4)	Rose
20. ie names (anagram) (8)	Nemesia
21. Ridicule citrus Fruit (4,6)	Mock Orange
22. Unseasonable Weather (4,2,6)	Snow in Summer
23. Coin Vera (anagram) (8)	Veronica
24. Bog Sweet (11)	Marshmallow
25. Capital Lions (6,5)	London Pride
26. Mixed Saliva (6)	Salvia
27. Hard Working Monarch (4,6)	Busy Lizzie
28. Tulip Tree (8)	Magnolia
29. ie a punt (anagram) (7)	Petunia
30. Remember Yours Truly... (6,2,3)	Forget Me Not
31. The Best Policy (7)	Honesty
32. Eye Part (4)	Iris
33. Someone to Fight With (7)	Anemone
34. The Archbishops Call to Prayer (10,4)	Canterbury Bell

CLUE	ANSWER
35. Mini held up (anagram) (10)	Delphinium
36. Old Woman's Hat (7,6)	Granny's Bonnet
37. Prickly Leg Part (10)	Hollyhocks
38. Bloom For 5th Sunday in Lent (7,6)	Passion Flower
39. Dessert Bill (5,7)	Sweet William
40. Lit up (anagram) (5)	Tulip

Congratulations to the winner - Barbara Neale

*Watch out for the next quiz in the New Year.*

## MOBILE HAIRDRESSER - DAWN



Ladies & Gentlemen ~  
fully qualified & insured ~ over 30 years  
experience ~ reduced prices for OAPs

Telephone: 0121 744 0421 or 07761 473524

# Mothers' UNION

Christian care for families

Diocese of Birmingham

Linda Pit welcomed Jan Dalton to our November meeting for a Christmas craft session.

Jan had made up goodie bags containing all that was needed for us to make a hanging Santa, Door Wreath, and Christmas gift wallet. Jan guided us through each section of making them up with some lovely results. It was a happy afternoon, enjoyed by all and concluded with refreshments. Thank you, Jan for making this possible.

Our Advent Service on Wednesday 6th December will be held in St James Church at 2pm.

Our programme for 2024 is being finalised and will be circulated to members during December.

**Visitors are most welcome to any of our meetings.**

*Susan Knight*

## THIS MONTH'S CROSSWORD

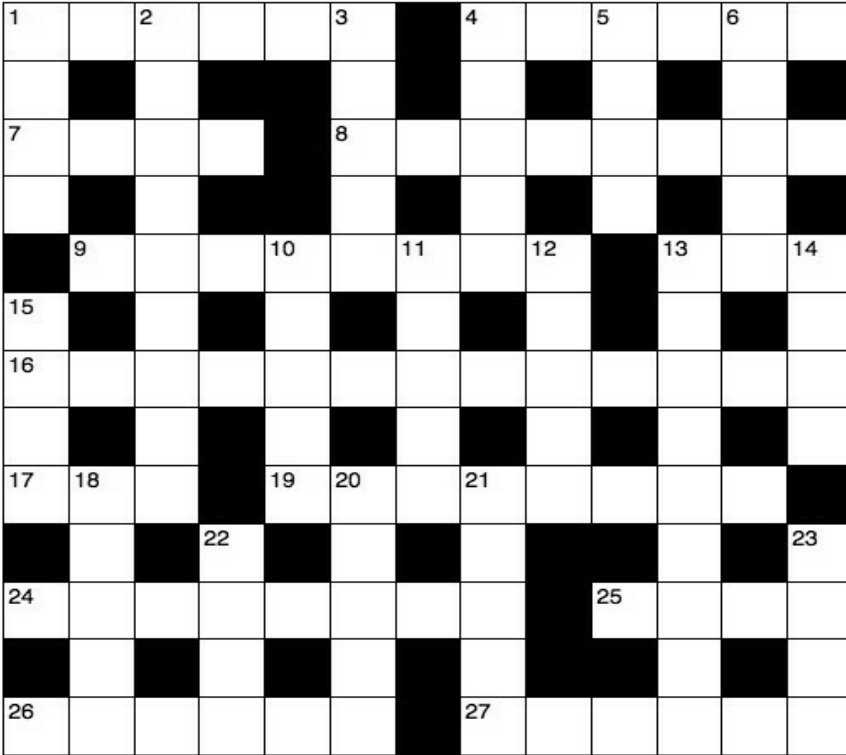
### Across

- 1** Rely (Psalm 62:7) (6)
- 4** 'He stretches out the heavens like a — , and spreads them out like a tent to live in' (Isaiah 40:22) (6)
- 7** What the dove carried the olive leaf in, when it returned to Noah's ark (Genesis 8:11) (4)
- 8** Annoy (1 Samuel 1:6) (8)
- 9** Judah's last king, who ended his days as a blind prisoner in Babylon (Jeremiah 52:11) (8)
- 13** 'They all — and were satisfied' (Luke 9:17) (3)
- 16** Eliphaz the Temanite was one; so was Bildad the Shuhite and Zophar the Naamathite (Job 2:11; 16:2) (4,9)
- 17** National Association of Evangelicals (of the USA) (1,1,1)
- 19** Popular song for New Year's Eve, Auld — — (4,4)
- 24** Able dock (anag.) (8)
- 25** The number of stones David chose for his confrontation with Goliath (1 Samuel 17:40) (4)
- 26** Elgar's best-known 'Variations' (6)
- 27** Soak (Isaiah 16:9) (6)

### Down

- 1** Money owing (Deuteronomy 15:3) (4)
- 2** Conciliatory (Titus 3:2) (9)
- 3** 'Do this, whenever you — it, in remembrance of me' (1 Corinthians 11:25) (5)
- 4** A group assisting in the governance of the Roman Catholic Church (5)
- 5** One of the gifts Joseph's brothers took with them on their second journey to Egypt (Genesis 43:11) (4)
- 6** 'Reach out your hand and — — into my side. Stop doubting and believe' (John 20:27) (3,2)
- 10** Be outstandingly good (2 Corinthians 8:7) (5)
- 11** 'What — — that you are mindful of him, the son of man that you care for him?' (Psalm 8:4) (2,3)
- 12** Horse's feet (Judges 5:22) (5)
- 13** Notice (Deuteronomy 17:4) (9)
- 14** Comes between 2 Chronicles and Nehemiah (4)
- 15** One of Israel's northern towns conquered by Ben-Hadad (1 Kings 15:20) (4)
- 18** Narnia's Lion (5)
- 20** One of the two rivers in which Naaman would have preferred to wash (2 Kings 5:12) (5)

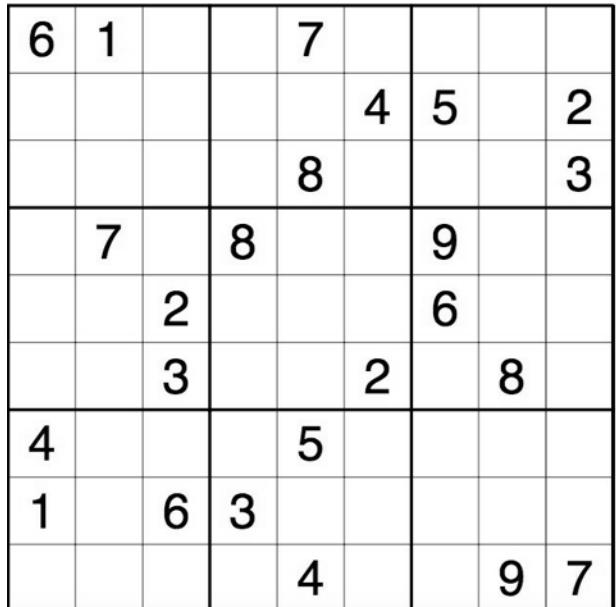
# THIS MONTH'S CROSSWORD & SUDOKU



*Answers are on page 23*



- 21** Avarice—one of the evils that come from inside people (Mark 7:22) (5)
- 22** Knight Grand Cross of St Michael and St George (1,1,1,1)
- 23** Jacob's first wife (Genesis 29:23) (4)



# BILL BOYCE DECORATORS

We have been a family run business since 1982 and we pride ourselves on the quality of our work.

We carry out private work but also carry out work in offices, schools, restaurants and shop premises.

Visit <https://billboycedecorators.co.uk> to find out more

**Telephone ~ 0121 744 0040**

**or 07976 810680 (Bill)**

**or 07966 275134 (Dan)**

89 Union Road  
Shirley, Solihull  
B90 3BY



**Email ~ sandraboyce61@hotmail.com**



**Bastock & Bruce Ltd**

F U N E R A L   D I R E C T O R S

*If Knowle is difficult to get to,  
we will happily visit you at  
home or you can meet Bruce  
at any of the Bastock family  
funeral homes.*

A partnership between C. Bastock Ltd and Bruce Bragg

Bruce is now the only remaining member of the Bragg family still in the industry following the sale of the Bragg family business in Shirley. This partnership brings a family business to Knowle with generations of experience ensuring the truly personal service you would expect from an independent business.

### **Knowle Funeral Home**

Brisker Court, 1685, High Street, Knowle. B93 0LN

**01564 33 5577 (24 hour)**

Serving all surrounding areas



[www.bastockandbruce.co.uk](http://www.bastockandbruce.co.uk)



## DECEMBER WORDSEARCH

### THE STORY OF 'SILENT NIGHT'

This much-loved carol comes from Austria, where it was first sung as *Stille Nacht, heilige Nacht* on Christmas Eve, 1818.

It was written by Father Joseph Mohr, a young priest at St Nicholas parish church, in the village of Oberndorf bei Salzburg.

As Christmas 1818 approached, he asked the local schoolmaster, Franz Xaver Gruber, to compose a melody for his carol. Gruber was organist in the nearby village of Arnsdorf, and so was happy to oblige.

On Christmas Eve they presented the carol to the church during the midnight mass. The carol went on to become loved world-wide; and the version sung by Bing Crosby is the third best-selling single of all time.



Answers are on page 23

M	O	H	R	L	A	A	M	A	S	S	T
R	T	N	E	L	I	S	T	I	L	L	E
Y	E	M	G	L	I	A	N	R	D	N	E
J	L	B	I	N	G	M	M	T	T	O	M
I	O	A	L	D	U	T	L	S	G	I	E
T	V	S	I	T	N	S	E	U	E	S	L
O	E	I	E	T	S	I	N	A	G	R	O
Y	D	N	H	P	R	R	G	A	E	E	D
O	A	G	I	P	H	H	I	H	C	V	Y
U	I	L	O	R	A	C	T	F	T	H	E
N	D	E	D	O	T	A	D	R	I	H	T
G	C	A	G	A	F	R	A	E	H	A	U

AUSTRIA  
 BING  
 CAROL  
 CHRISTMAS  
 EVE  
 FATHER  
 FIRST  
 HEILIGE  
 JOSEPH  
 LOVED  
 MASS  
 MELODY  
 MIDNIGHT  
 MOHR  
 NACHT  
 NIGHT  
 ORGANIST  
 PRIEST  
 SILENT  
 SINGLE  
 STILLE  
 SUNG  
 THIRD  
 VERSION  
 YOUNG

# Age is just a number in our care homes

Whether you're 65 or 105, you're still you.  
Up for new things or loving your old  
favourites. Find a new place to enjoy  
every day with Bupa care homes.



This is  
health

## Bupa care home near you

Nursing | Residential | Short stay



9.4

carehome.co.uk  
Review Score  
59 reviews

The Priory Care Home  
1 Shelly Crescent, Monkspath,  
Shirley B90 4XA

The Review Score is based on the quality and  
number of independent reviews this home has  
received on carehome.co.uk in the last two years,  
at the time of going to print.

- All types of funding welcome
- No health insurance needed



Call our helpful care team  
to start your search

**0121 756 4683**

[bupa.co.uk/care-services](http://bupa.co.uk/care-services)

Lines are open 8am to 6.30pm Monday to Friday,  
9am to 12.30pm Saturday. Closed Sundays and  
bank holidays. Calls are charged at no more than  
local rate and count towards any inclusive minutes  
from mobiles. We may record or monitor our calls.



Care Home  
Provider of the  
Year 2022

012685 JAN23

## COZY TOES

**Bev Hughes DipCFhp**

**Mobile Foot Health Practitioner**

**07764 636468 or  
0121 451 3586**



**OFFERING A FRIENDLY,  
RELIABLE, PROFESSIONAL  
SERVICE AT AFFORDABLE PRICE**

**Over 65 £20.00 per session**

**Under 65 £25.00 per session**

### TREATMENT INCLUDES:-

- ✓ FREE CONSULTATION
- ✓ TOENAILS CUT &
- ✓ THICKNESS REDUCED  
CALLOUSES REMOVED
- ✓ CORNS & VERRUCAS  
TREATED
- ✓ DIABETIC FOOTCARE

**PUZZLE ANSWERS**

6	1	5	2	7	3	8	4	9
3	8	9	1	6	4	5	7	2
7	2	4	5	8	9	1	6	3
5	7	1	8	3	6	9	2	4
8	4	2	7	9	5	6	3	1
9	6	3	4	1	2	7	8	5
4	3	7	9	5	8	2	1	6
1	9	6	3	2	7	4	5	8
2	5	8	6	4	1	3	9	7

D	E	P	E	N	D	C	A	N	O	P	Y	
E	E	R	U	U	U							
B	E	A	K	I	R	R	I	T	A	T	E	
T	C	N	I	S	I							
Z	E	D	E	K	I	A	H	A	T	E		
I	A	X	S	O	T	Z						
J	O	B	S	C	O	M	F	O	R	T	E	R
O	L	E	A	F	E	A						
N	A	E	L	A	N	G	S	Y	N	E		
S	G	B	R	T	L							
B	L	O	C	K	A	D	E	F	I	V	E	
A	M	N	E	O	A							
E	N	I	G	M	A	D	R	E	N	C	H	

M	O	H	R	L	A	A	M	A	S	S	T
R	T	N	E	L	I	S	T	I	L	L	E
Y	E	M	G	L	I	A	N	R	D	N	E
J	L	B	I	N	G	M	M	T	T	O	M
I	O	A	L	D	U	T	L	S	G	I	E
T	V	S	I	T	N	S	E	U	E	S	L
O	E	I	E	T	S	I	N	A	G	R	O
Y	D	N	H	P	R	R	G	A	E	E	D
O	A	G	I	P	H	I	H	C	V	Y	
U	I	L	O	R	A	C	T	F	T	H	E
N	D	E	D	O	T	A	D	R	I	H	T
G	C	A	G	A	F	R	A	E	H	A	U



**SHIRLEY COMMUNITY CENTRE**  
 Stratford Road, Opp. Longmore Road  
**INDOOR SHORT MAT BOWLING**



Wednesdays 2pm, Fridays 10am & Tuesdays 7pm

Wednesday & Friday No Experience Necessary as Tuition Given  
 Tuesday League Bowling

**COME AND MAKE NEW FRIENDS**



# C Bastock Ltd

## FUNERAL DIRECTORS

Independent Family Owned Funeral Directors since 1856

### Shirley Funeral Home

100, Stratford Road  
Shirley. B90 3BH  
0121 726 2626

### Solihull Funeral Home

67-71 Warwick Road,  
Solihull. B92 7HP  
0121 706 4040

### Yardley Funeral Home

112 Church Road,  
Yardley. B26 8UX  
0121 784 3230



Whether you have a traditional, contemporary or eco funeral in mind our family are here to help you. Our dedicated team will guide you through the choices and decisions to ensure a unique and befitting funeral.

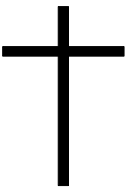
Specialist provider of Pre-Paid Funeral Plans

Free, no obligation help and advice.

Peace of mind with secure affordable options

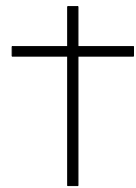
[www.cbastock.co.uk](http://www.cbastock.co.uk)

## Monumental Masons



### BANNOCKS OF SOLIHULL

Five generations of quality manufacturing  
and service from a family business.



All aspects of Monumental Masonry

PERSONAL ATTENTION ~ ADVISORY SERVICE  
LARGE DISPLAY

117 Streetsbrook Road, Solihull B90 3PF  
(Opposite Robin Hood Cemetery)

**Tel: 0121 744 1727**

[www.bannocksmemorials.co.uk](http://www.bannocksmemorials.co.uk)



**Tudor Grange Primary Academy St James**  
*Nurture, Learn, Achieve*

**Principal - Mrs H Lynch**

For details about the school contact the PA to the Principal - Mrs G Giles

**Tudor Grange Primary Academy St James, Halifax Road, Shirley, Solihull B90 2BT**

Phone: 0121 744 7897 office@stjames.tgacademy.org.uk www.stjames.tgacademy.org.uk

**STEPHEN & PHILIP  
 PAINTER**

**FUNERAL DIRECTORS  
 INDEPENDENT & FAMILY-OWNED**



The only funeral homes still owned by  
**The Painter Family.** Providing a dignified & personal  
 service across Birmingham & Solihull

**HALL GREEN OFFICE**

192 ROBIN HOOD LANE  
 HALL GREEN  
 BIRMINGHAM B28 0LG

**TEL: 0121 777 4300**

**ACOCKS GREEN OFFICE**

213 YARDLEY ROAD  
 ACOCKS GREEN  
 BIRMINGHAM B27 6LZ

**TEL: 0121 707 1172**

**WWW.STEPHENANDPHILIPPAINTER.COM**

## FROM THE PARISH REGISTERS - OCTOBER 2023

### Baptisms

22nd Ellison Taylor  
Nyron Taylor

29th Rose Sulmina



### Wedding

14th John Dennis Andrew Hogan and Hayley Louise Evans

### Funerals

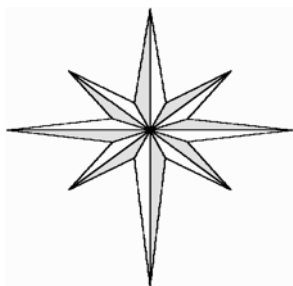
3rd Freddy Powell

16th Helen Cunningham

20th Brenda Mary Goudie

30th Malcolm Lay

## PRAY WITH US



Give to us your people, living God,  
A renewed faith and a bold vision  
that we may proclaim  
the Good News of your Son  
with faith that your kingdom will come,  
with hope for our community  
and with love for Him  
who died and rose again  
to save us, Jesus Christ our Risen Lord  
Amen

God of Mission, who alone brings growth to your Church,  
send your Holy Spirit to give vision to our planning,  
wisdom to our actions, and power to our witness.  
Help our church to grow in numbers, in spiritual commitment to you,  
and in service to our local community.  
Through Jesus Christ, our Lord.  
Amen



# SHIRLEY PARISH GUIDE *continued*

## READERS

**Kate Day**

email: kate\_day@me.com

Tel: 0121 537 9672

**Gill Gough**

email: g.gough@hotmail.co.uk

Tel: 0121 603 2636

**Sarah Penfold**

email: sarahpenfold@blueyonder.co.uk

Tel: 0121 681 1525

**Denise Smith**

email: deesmith1181@hotmail.com

Tel: 07815 193892

## CHURCH WARDENS

**Parish Wardens**

Linda Pitt Tel: 0121 744 6777  
email: lindaalisonpitt@gmail.com

Gill Hanton Tel: 0121 733 2347  
email: gill.hanton@btinternet.com

**Deputy Wardens - St James the Great Church**

Kate Crocker John Richards  
Tel: 07562 664163 Tel: 07941 634971

**Deputy Warden - Christ the King Church**

Denise Smith  
Tel: 07815 193892

**Deputy Warden - St John the Divine Church**

Linda Alford  
Tel: 0121 430 4785

## SAFEGUARDING

Sue Harries  
Tel: 07977 012753 or 0121 745 8896 (c/o Parish Office)

***As you all know we are a parish that takes safeguarding very seriously.  
Everyone who comes to our churches deserves to feel included and  
very importantly, safe.***

***If anything is concerning you, please talk to Sue Harries, Safeguarding Co-ordinator,  
or Paul Day, Vicar.***

***We must all look after one another.***



## **Decorating Plus ... (Odd Jobs)**

B90 and nearby

Call Stewart on **07802 566 441**

Email - **DecoratingPlus@hotmail.co.uk**

# EARLSWOOD Christmas Shop

TREES • LIGHTS • DECORATIONS  
BAUBLES • GIFTS • FOOD & DRINK  
and much more!



## FRESH-CUT CHRISTMAS TREES

Premium  
Nordmann  
Fir Trees



NOW  
IN  
STOCK!

(Non-Drop & Soft Touch)

## FRESH-CUT HANDMADE WREATHS

Lovingly  
handmade  
in store by  
our specialist  
plant team



## Shakespeare's

Breakfast • Lunch • Snacks  
Hot and Cold Drinks & more



RESTAURANT | EAT IN or TAKEAWAY | OPEN 7 DAYS

eglc

**EARLSWOOD GARDEN & LANDSCAPE CENTRE**

FORSHAW HEATH ROAD, EARLSWOOD, SOLIHULL, B94 5JU

t. 01564 702 314 [www.earlswoodglc.co.uk](http://www.earlswoodglc.co.uk)

Follow us: @EarlswoodGLC

**OPEN 7 DAYS**

Mon to Fri 7:30am - 5pm

Saturday 8am - 5pm

Sunday 10am - 4pm

Advertisement Feature

## Quality care in Solihull you can trust

When a family is thinking about care for a loved one, they want the best - they want to know that the care home they choose will put their loved one's safety, happiness and wellbeing first.

Blossomfield Grange is managed by award-winning provider Care UK - one of the UK's most highly successful care home operators\* with over 40 years' experience of delivering high quality care to older people.

Blossomfield Grange stands out from other care homes with its large apartment-style living and luxury facilities. The home offers a choice between two room types, each with their own ensuite bathrooms, private dining areas and kitchenettes. Our one bed suites are ideal for individuals, whilst our companion suites offer an additional room, perfect for couples to enjoy as an extra living area.

Living at Blossomfield Grange is all about quality of life, and we offer tailored care both for residential residents, as well as those living with dementia on our specialist memory care floor. All residents are supported to continue to enjoy lifelong hobbies and make new friends, from music sessions to quizzes, while dancing, exercise classes, yoga and gardening support residents to stay fit and active.

Blossomfield Grange is designed with signage, colour schemes, soft furnishings and floor coverings all chosen to create a calm and accessible home from home. The dementia suite also includes extra

items to aid reminiscence and create a sensory and engaging space. We also have our own café bistro, hair salon and large established gardens, enabling all residents to enjoy a fulfilling lifestyle.

**Blossomfield Grange care home**  
**1 Worcester Way,**  
**Off Dog Kennel Lane,**  
**Solihull B90 4JX**  
**01217 565 748**  
**[careuk.com/blossomfield-grange](http://careuk.com/blossomfield-grange)**

\*As rated by the Care Quality Commission in England and the Care Inspectorate in Scotland.

